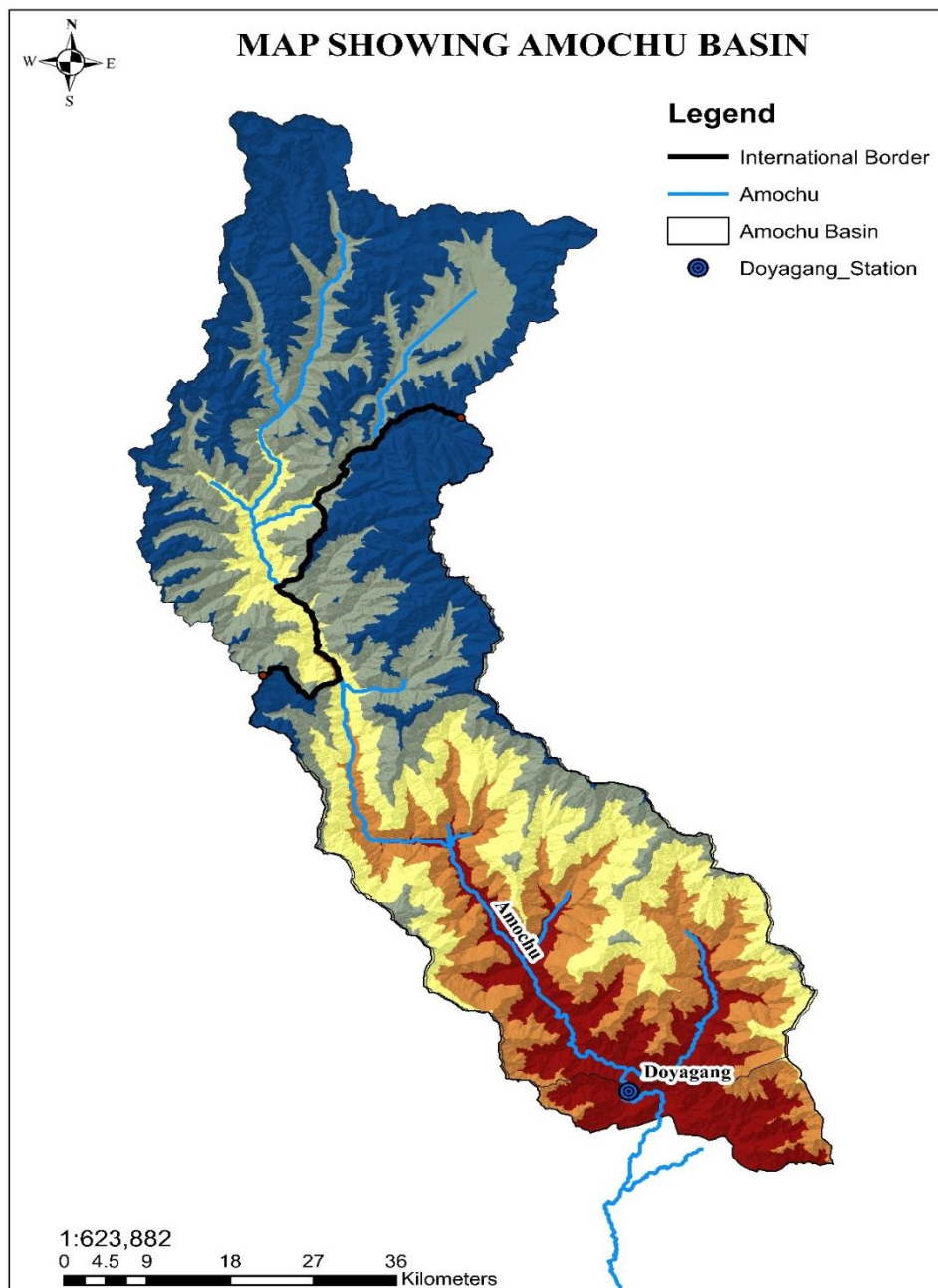


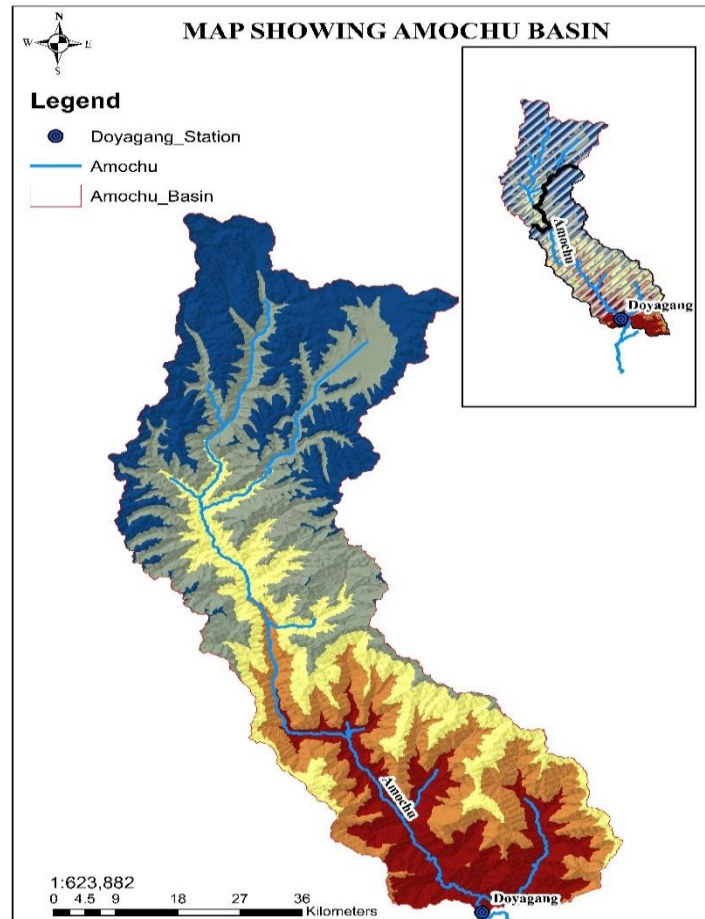
## 4 Amochu Basin

*The Amochhu* is trans-boundary river that origin in China and flows through the western districts of Ha and Samtse, before it finally drains into the plains of India via Phuntsholling. The Jaldhaka is small trans-boundary river that that originates from southeastern Sikkim in the eastern Himalayas. The river enters into Bhutan and is joined by Bindu Khola and other small tributaries under Sibsoo Dungkhag, Samtse.

There is one principle station located at Doyagang in the basin.



## 4.1 Sub-Catchment – Amochu Basin



### **Doyagang Sub Catchment:**

*Station Location: Doyagang on Amochu*

*Coordinates: Longitude : 89:20:06*

*Latitude : 26:53:12*

*Elevation : ,354.6*

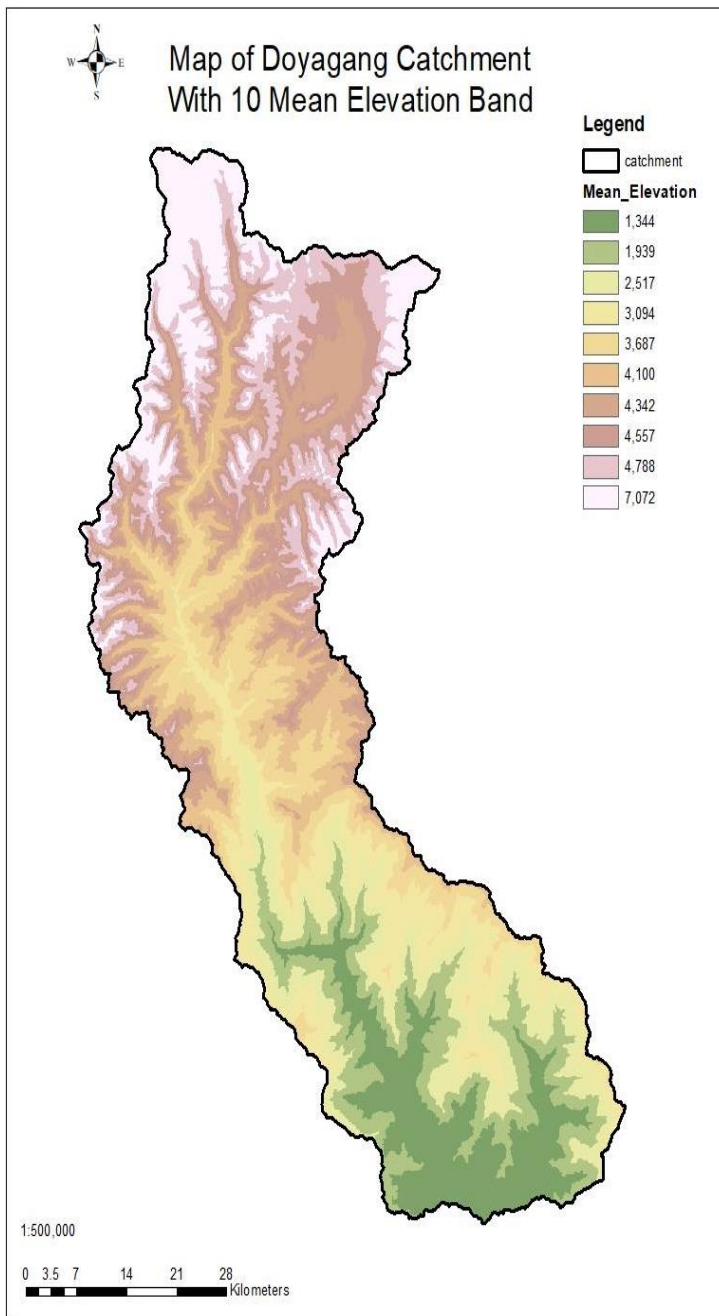
*Catchment Area: 3710.063sq.km*

### **Major Streams and River Lengths:**

Sl.No	Rivers	Length (km)
1	Amochu till Doyagang	139.59
2	Amochu till exit	183.79

## 4.2 Land Use Area

**Doyagang Sub Catchment:**



Sl. No	Average elevation band	Type	Area (sq.km)
1	1344	field	85.33
		forest	285.67
2	1939	field	59.36
		forest	311.64
3	2517	field	7.42
		forest	363.58
4	3094	field	29.68
		forest	341.32
5	3687	field	144.69
		forest	226.31
6	4100	field	207.76
		forest	163.24
7	4342	field	274.54
		forest	96.46
8	4557	field	326.48
		forest	44.52
9	4788	field	345.03
		forest	25.97
10	7072	field	289.38
		forest	51.94
		Glacier/lakes	29.68

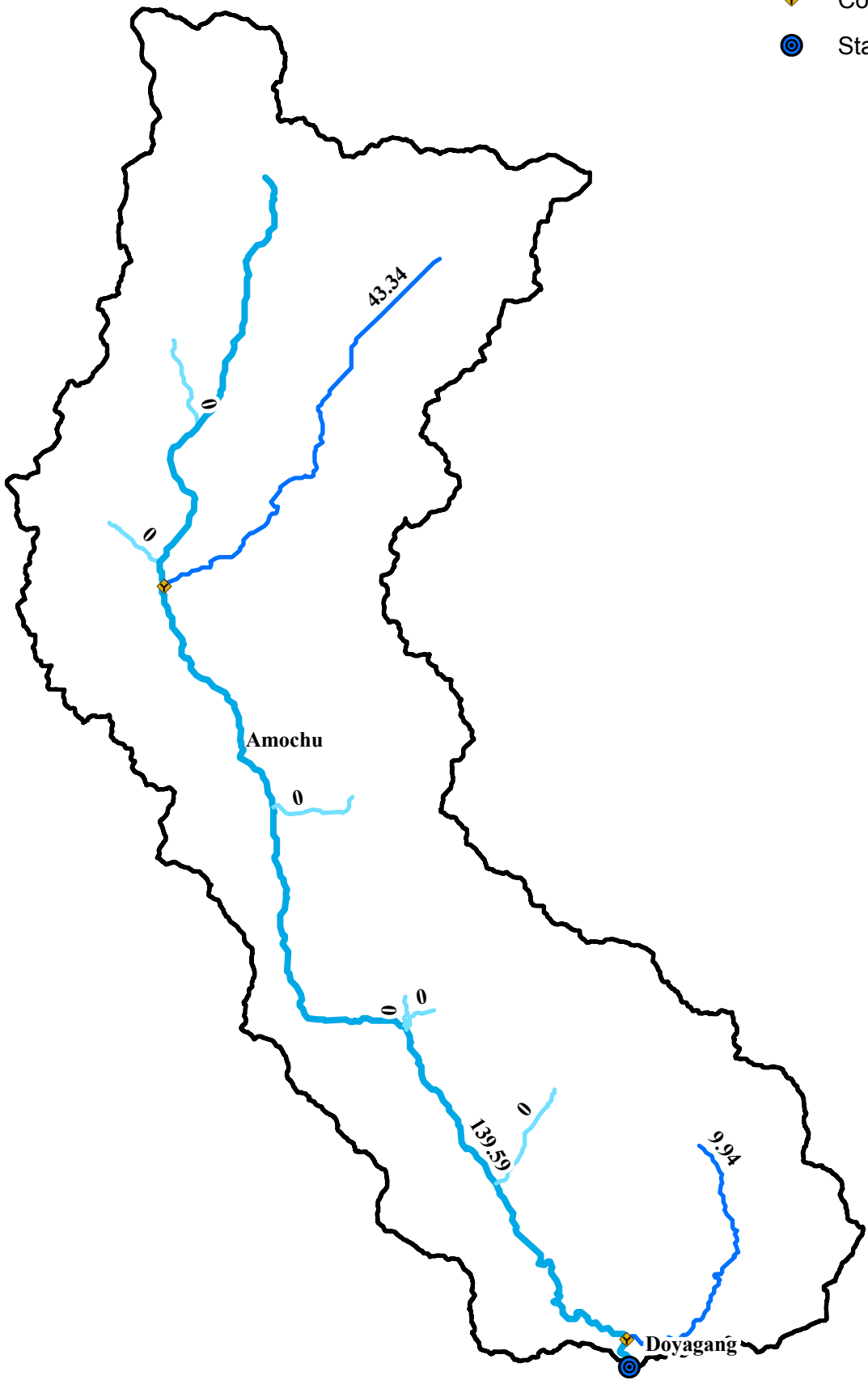


# MAP SHOWING LENGTH OF RIVERS IN AMOCHU BASIN



## Legend

- ◆ Confluence
- Station



1:532,831

