



༄༅། རྒྱལ་ཡོངས་ཚུ་དབྱུང་དང་གནམ་གཤིས་རིག་པའི་རྩེ་བ།

NATIONAL CENTRE FOR HYDROLOGY AND METEOROLOGY
THIMPHU: BHUTAN

“Centre of Excellence in Hydrology, Meteorology and Cryosphere Science and Services”



12 June, 2026

Extended Range Prediction for Bhutan

Background

Extended Range Prediction (ERP) for Bhutan is prepared with the support from the Indian Meteorological Department (IMD), Government of India. The model used for the system is CFSv2 coupled model (Atmospheric and Ocean model) which runs once every week (Wednesday), with the 16 Ensemble Members at the horizontal resolution of around 25 km, and the products are made available the next day (Thursday). Therefore, the ERP products for Bhutan will be generated every Friday. ERP for Bhutan is carried out for two climate variables, rainfall and temperature.

Generally, the forecast output is produced on a weekly basis for a period of a month for both the variables. The current products available from NCHM are on pilot basis which needs further studies and validation with the ground observations until the product is fully operationalized.



ལྷོ། རྒྱལ་ཡོངས་ཚུད་ཕྱད་དང་གནམ་གཤིས་རིག་པའི་རྩེ་བ།

NATIONAL CENTRE FOR HYDROLOGY AND METEOROLOGY
THIMPHU: BHUTAN

"Centre of Excellence in Hydrology, Meteorology and Cryosphere Science and Services"



Observed weather over last week

Maximum and minimum temperatures remained relatively consistent across most parts of the country throughout the week, with slight fluctuations observed on some days. Heavy rainfall was recorded across a few regions. The table below presents the observed real-time rainfall and temperature data from regional meteorological centres over the past week.

Station		05 Jun	06 Jun	07 Jun	08 Jun	09 Jun	10 Jun	11 Jun
Thimphu	Tmax (°C)	25.5	25.0	25.5	24.0	25.5	26.0	23.5
	Tmin (°C)	14.0	14.0	15.0	14.5	15.5	16.0	15.0
	Rain (mm)	4.0	0.0	0.0	0.0	0.0	0.0	0.8
Dagana	Tmax (°C)	25.5	23.5	27.0	22.0	23.0	25.0	26.0
	Tmin (°C)	18.0	19.0	18.5	20.0	19.0	18.5	18.5
	Rain (mm)	8.0	0.4	2.2	3.0	0.4	0.2	13.0
Bumthang	Tmax (°C)	21.0	20.5	22.5	20.5	20.0	19.5	20.0
	Tmin (°C)	14.5	15.0	15.5	15.5	15.0	15.5	13.0
	Rain (mm)	2.8	1.5	0.5	0.1	15.2	0.2	1.3
S/Jongkhar	Tmax (°C)	26.0	29.5	31.0	29.0	28.5	29.5	30.0
	Tmin (°C)	21.5	22.0	22.5	24.0	22.0	22.0	22.0
	Rain (mm)	52.4	0.6	38.4	6.0	22.6	30.2	0.1
Gasa	Tmax (°C)	20.0	15.0	16.0	18.5	17.0	19.0	20.0
	Tmin (°C)	13.0	14.0	13.0	13.5	13.0	12.0	13.0
	Rain (mm)	24.8	19.8	0.0	13.8	17.8	7.4	1.8



༄༅། རྒྱལ་ཡོངས་ཚུད་ཕྱད་དང་གནམ་གཤིས་རིག་པའི་སྡེ་བ།།

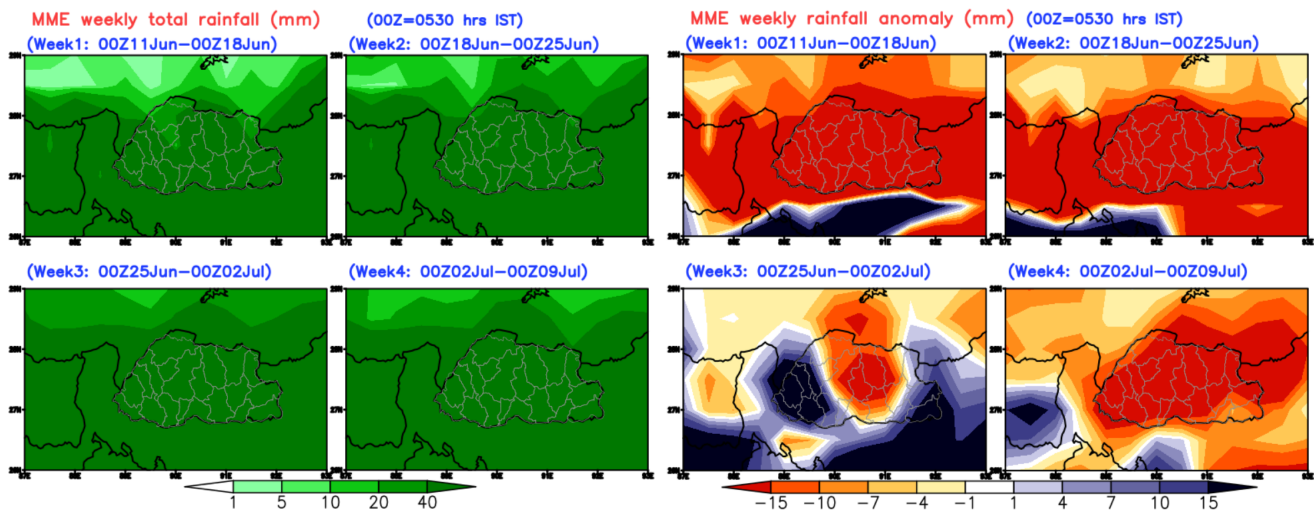
NATIONAL CENTRE FOR HYDROLOGY AND METEOROLOGY
THIMPHU: BHUTAN

"Centre of Excellence in Hydrology, Meteorology and Cryosphere Science and Services"



Weekly forecast for Bhutan

1. Rainfall Prediction



Week 1 (12 Jun - 18 Jun), Week 2 (19 Jun - 25 Jun) and Week 4 (03 Jul - 09 Jul)

Below-normal rainfall conditions are likely to prevail across much of the country during the first, second, and fourth weeks.

Week 3 (26 Jun - 02 Jul)

Above-normal rainfall is likely over the western, south-western, and south-eastern parts of the country during the third week.



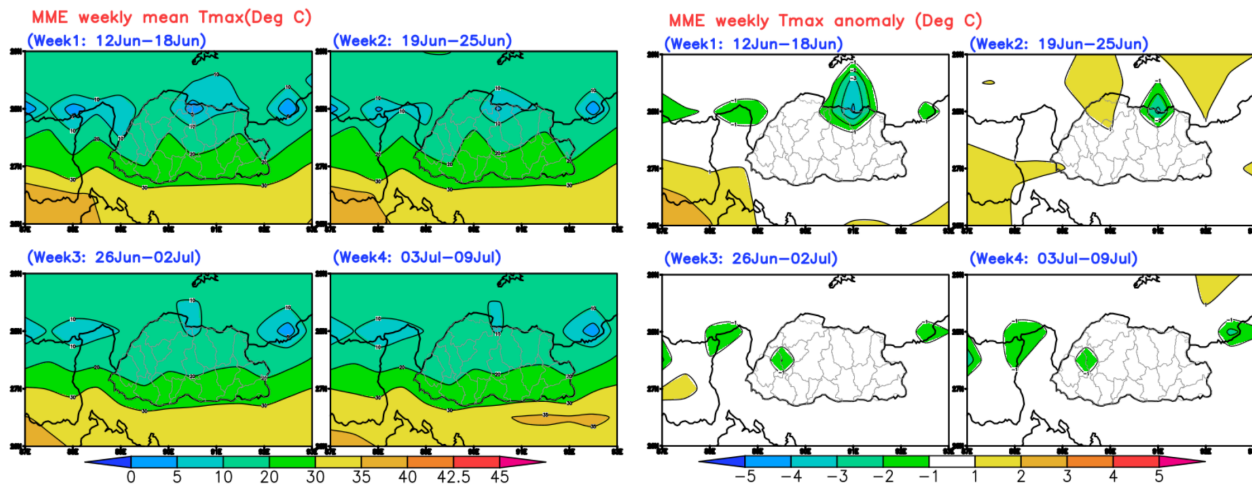
༄༅། རྒྱལ་ཡོངས་ཚུད་ཕྱད་དང་གནམ་གཤིས་རིག་པའི་ལྷོ་བ།།

NATIONAL CENTRE FOR HYDROLOGY AND METEOROLOGY
THIMPHU: BHUTAN

"Centre of Excellence in Hydrology, Meteorology and Cryosphere Science and Services"



2. Maximum Temperature Prediction



Week 1 (12 Jun - 18 Jun), Week 2 (19 Jun - 25 Jun), Week 3 (26 Jun - 02 Jul) and Week 4 (03 Jul - 09 Jul)

Near-normal maximum temperatures are expected over the coming weeks, although isolated pockets of the country may experience above-normal or below-normal conditions.



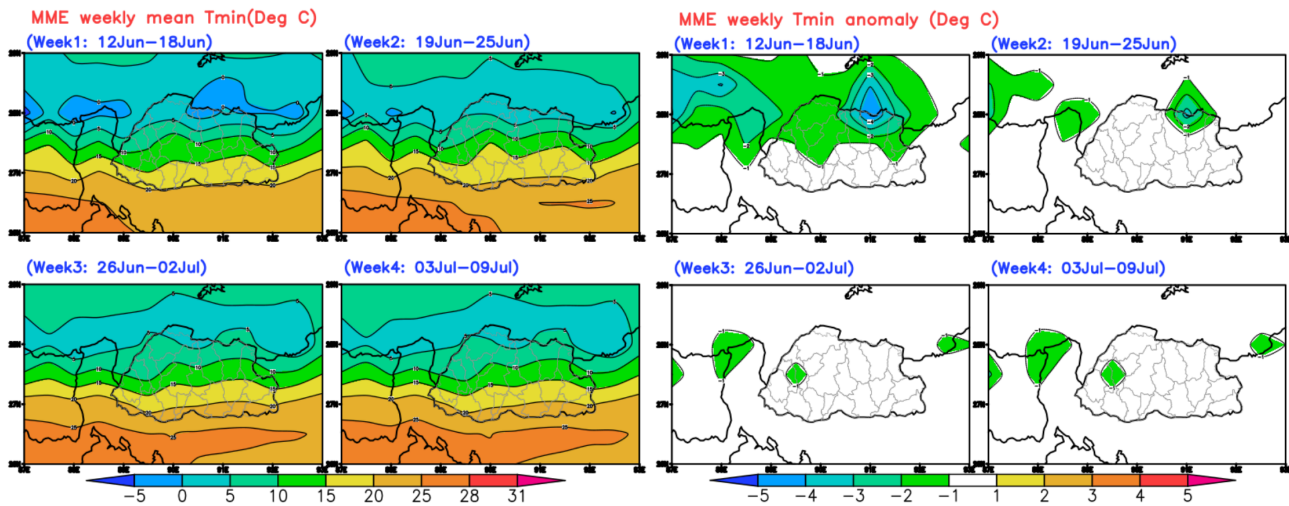
༄༅། རྒྱལ་ཡོངས་ཚུད་ཕྱད་དང་གནམ་གཤིས་རིག་པའི་ལྷེ་བ།།

NATIONAL CENTRE FOR HYDROLOGY AND METEOROLOGY
THIMPHU: BHUTAN

"Centre of Excellence in Hydrology, Meteorology and Cryosphere Science and Services"



3. Minimum Temperature Prediction



Week 1 (12 Jun - 18 Jun), Week 2 (19 Jun - 25 Jun), Week 3 (26 Jun - 02 Jul) and Week 4 (03 Jul - 09 Jul)

Minimum temperatures are expected to remain near normal over most parts of the country during the coming weeks, with slightly below-normal conditions likely in the northern regions and some isolated pockets.

Summary

- Rainfall is expected to remain below normal across most parts of the country during the first, second, and fourth weeks, with above-normal rainfall likely over the western, south-western, and south-eastern regions in the third week.
- Near-normal maximum temperatures are expected over the coming weeks, although isolated pockets of the country may experience above-normal or below-normal conditions.
- Minimum temperatures are expected to remain near normal over most parts of the country during the coming weeks, with slightly below-normal conditions likely in the northern regions and some isolated pockets.



༄༅། རྒྱལ་ཡོངས་ཚུན་ཕྱད་དང་གནམ་གཤིས་རིག་པའི་རྩེ་བ།

NATIONAL CENTRE FOR HYDROLOGY AND METEOROLOGY
THIMPHU: BHUTAN

“Centre of Excellence in Hydrology, Meteorology and Cryosphere Science and Services”



Classification of rainfall for 24 Hours

No rainfall	0.0 mm
Very light rainfall	0.1 to 0.9 mm
Light rainfall	1.0 to 10.0 mm
Moderate rainfall	11.0 to 30.0 mm
Heavy rainfall	31.0 to 70.0 mm
Very heavy rainfall	71.0 to 150.0 mm
Extremely heavy rainfall	Equal or more than 151.0 mm