



ལྷོ། རྒྱལ་ཡོངས་ཚུན་ཕྱད་དང་གནམ་གཤིས་རིག་པའི་སློབ་བཤེས་ལྷན་ཁག་།
NATIONAL CENTRE FOR HYDROLOGY AND METEOROLOGY
THIMPHU: BHUTAN



“Centre of excellence in Hydrology, Meteorology and Cryosphere Science and Services”

Weather Analysis and Report

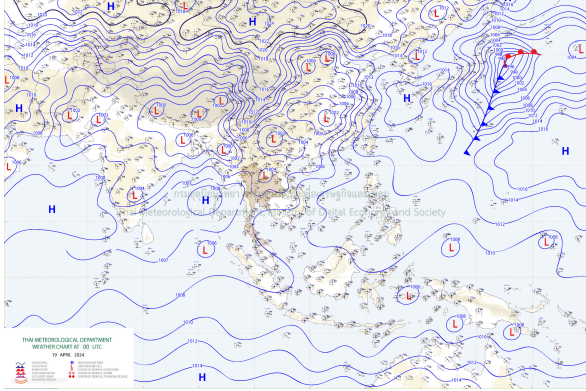
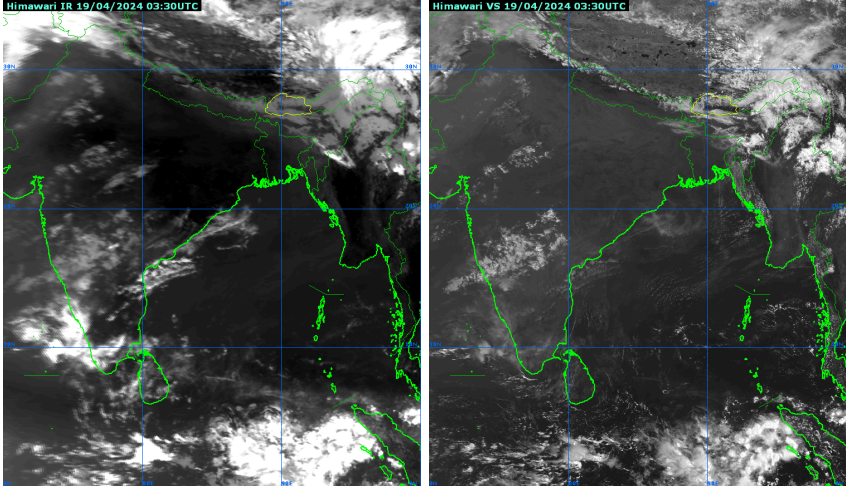
Date and time of issue: 19 April 2024, 10:00 AM

The forecast is valid for 72 hours from the time of issue

Region	Forecast Point	20 April	21 April	22 April
		Saturday	Sunday	Monday
Northern	Gasa	Partly cloudy with light rain	Partly cloudy with light rain	Partly cloudy
North-Eastern	Lhuentse, Tashi Yangtse	Mostly cloudy with light rain	Mostly cloudy with light rain	Partly cloudy
Central	Trongsa, Bumthang	Mostly cloudy with light rain	Partly cloudy with light rain	Partly cloudy
Western	Haa	Partly cloudy with light rain	Partly cloudy	Partly cloudy
	Paro, Thimphu	Partly cloudy with light rain	Partly cloudy	Partly cloudy
	Punakha, Wangdue Phodrang	Partly cloudy with light rain	Partly cloudy	Partly cloudy
South-Western	Phuentsholing	Partly cloudy with light rain	Partly cloudy	Partly cloudy
	Samtse	Partly cloudy with light rain	Partly cloudy	Partly cloudy
	Sarpang	Mostly cloudy with light rain	Partly cloudy	Partly cloudy
	Dagana, Tsirang	Mostly cloudy with light rain	Partly cloudy	Partly cloudy
South-Eastern	Zhemgang	Mostly cloudy with light rain	Partly cloudy	Partly cloudy
	Mongar	Mostly cloudy with light rain	Partly cloudy	Partly cloudy
	Tashigang	Mostly cloudy with light rain	Partly cloudy	Partly cloudy
	Pema Gatshel	Mostly cloudy with light rain	Partly cloudy	Partly cloudy
	Samdrup Jongkhar	Mostly cloudy with light rain	Partly cloudy	Partly cloudy



Weather Observation and Analysis

<p>1. Meteorological Observing Stations</p>	<p>Yesterday, stations across the country observed mostly cloudy to cloudy weather with light to isolated moderate rainfall over the country. Highest rainfall recorded during the last 24 hours was 65.2mm at Sipsoo meteorological station under Samtse Dzongkhag</p>
<p>2 Surface Charts</p>	<p>Surface Chart shows a low pressure system over Bhutan.</p>  <p><i>Figure: Surface Chart Analysis updated on 00 UTC of 19 April 2024</i></p>
<p>2. Satellite Images</p>	<p>The satellite image below shows scattered low cloud cover over the country.</p>  <p><i>Figure: Infrared Channel (IR) left and Visible channel (VS) right updated on 19 April 2024</i></p>
<p>3. Indian Meteorological Department (IMD)</p>	<p>19th April - 23th April 2024:-Thunderstorms accompanied with lightning are very likely at Gangetic west Bengal, Sikkim, Sub Himalayan west Bengal, Assam, Meghalaya. Heavy rainfall is likely at isolated places over Assam & Meghalaya.</p>



Weather Research and Forecasting Model (WRF)

Precipitation: Isolated light rainfall is likely over the country during the next 48 hours.

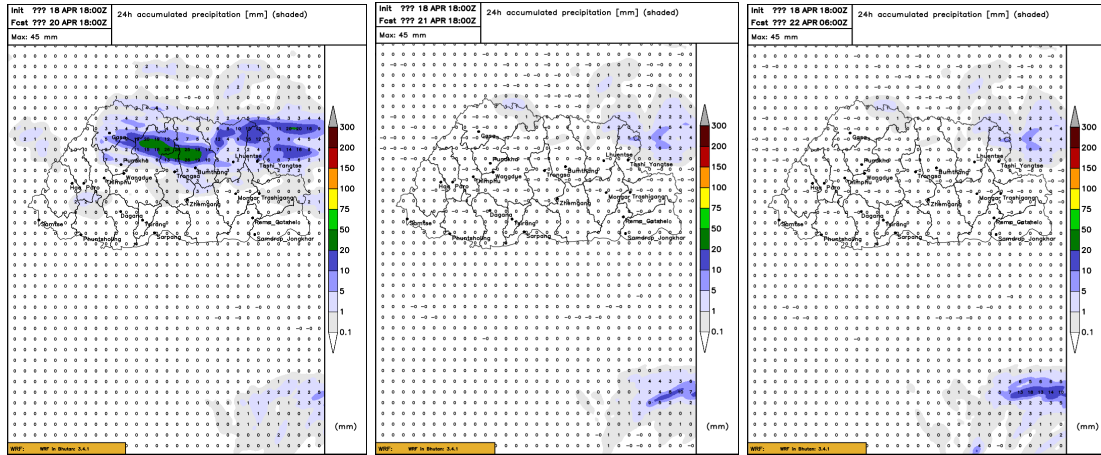


Figure: 24-hour total precipitation dated at 18 UTC, 18 April 2024

Wind: Gusty winds are likely over the country during the next 72 hours.

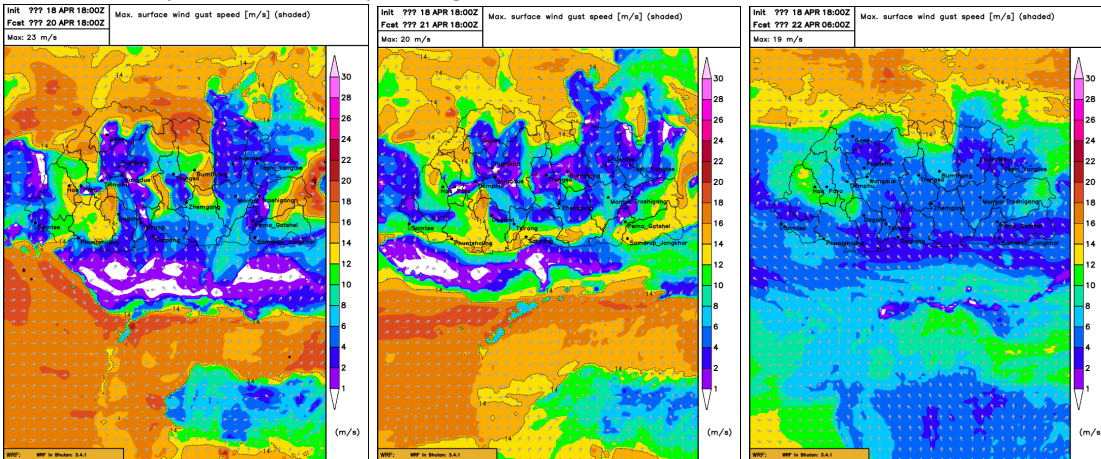


Figure: Wind Gust updated at 18 UTC, 18 April 2024

Thunderstorms: Thunderstorms are likely over the isolated places of the country during the next 72 hours.

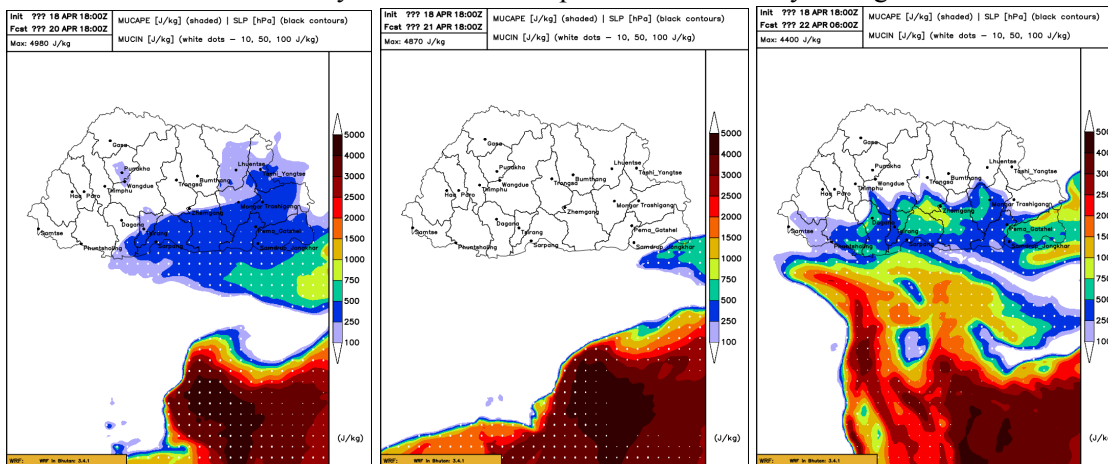


Figure: Mucape updated at 18 UTC, 18 April 2024



ཨ། རྒྱལ་ཡོངས་ཚུ་དབྱེད་དང་གནམ་གཤིས་རིག་པའི་སློབ་ཁྲིམས།
NATIONAL CENTRE FOR HYDROLOGY AND METEOROLOGY
THIMPHU: BHUTAN

“Centre of excellence in Hydrology, Meteorology and Cryosphere Science and Services”

