



ལྷོ། རྒྱལ་ཡོངས་ཚུ་དབྱུང་དང་གནམ་གཤིས་རིག་པའི་སློབ་འཁུངས་།  
**NATIONAL CENTRE FOR HYDROLOGY AND METEOROLOGY**  
**THIMPHU: BHUTAN**



“Centre of excellence in Hydrology, Meteorology and Cryosphere Science and Services”

**Weather Analysis and Report**

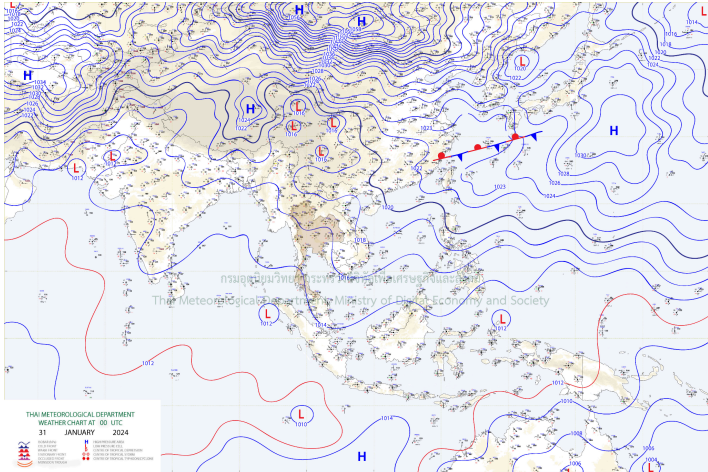
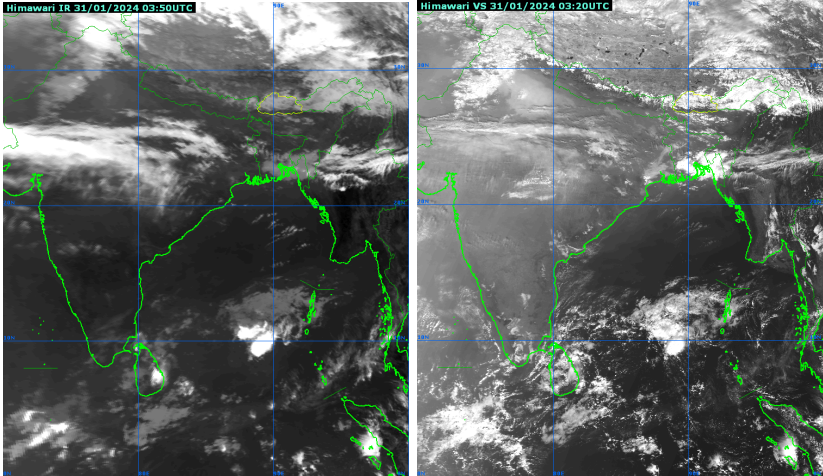
**Date and time of issue: 31 January 2024, 10:00 AM**

**The forecast is valid for 72 hours from the time of issue**

Region	Forecast Point	01 February	02 February	03 February
		Thursday	Friday	Saturday
Northern	Gasa	Mostly Cloudy with rain/snow	Mostly Cloudy with light rain/snow	Mostly Cloudy with light rain/snow
North-Eastern	Lhuentse, Tashi Yangtse	Mostly Cloudy with light rain	Mostly Cloudy with light rain	Mostly Cloudy with light rain
Central	Trongsa, Bumthang	Mostly Cloudy with rain/snow	Mostly Cloudy with light rain/snow	Mostly Cloudy with light rain/snow
Western	Haa	Mostly Cloudy	Mostly Cloudy with light rain/snow	Mostly Cloudy with light rain/snow
	Paro, Thimphu	Mostly Cloudy with light rain/snow	Mostly Cloudy with light rain/snow	Mostly Cloudy with light rain/snow
	Punakha, Wangdue Phodrang	Mostly Cloudy with light rain	Mostly Cloudy with light rain	Mostly Cloudy with light rain
South-Western	Phuentsholing	Mostly Cloudy	Partly cloudy	Partly cloudy
	Samtse	Mostly Cloudy	Partly cloudy	Partly cloudy
	Sarpang	Partly Cloudy	Partly Cloudy	Partly cloudy
	Dagana, Tsirang	Mostly Cloudy	Mostly Cloudy	Mostly Cloudy
South-Eastern	Zhemgang	Mostly Cloudy	Mostly Cloudy with light rain	Mostly Cloudy with light rain
	Mongar	Mostly Cloudy with light rain	Mostly Cloudy with light rain	Mostly Cloudy with light rain
	Tashigang	Mostly Cloudy with light rain	Mostly Cloudy	Mostly Cloudy
	Pema Gatshel	Partly Cloudy	Partly cloudy	Partly cloudy
	Samdrup Jongkhar	Mostly Cloudy	Partly cloudy	Partly cloudy



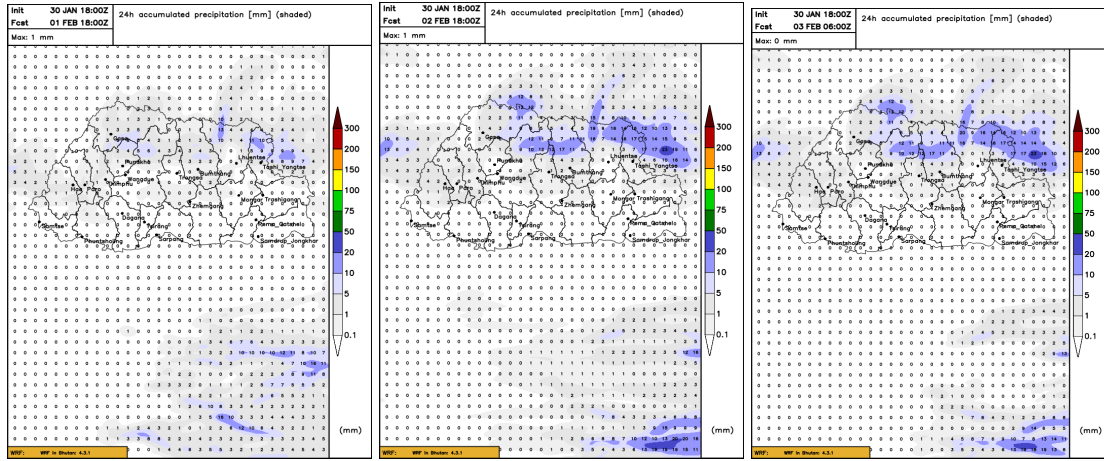
**Weather Observation and Analysis**

<p><b>1. Meteorological Observing Stations</b></p>	<p>Yesterday, stations across the country observed Partly to mostly cloudy weather with isolated light rainfall/snowfall and highest rainfall recorded was 6.6 mm at Sibsu meteorology station under Samtse Dzongkhag.</p>
<p><b>2 Surface Charts</b></p>	<p>Surface Chart shows a high pressure system over north of Bhutan.</p>  <p><i>Figure: Surface Chart Analysis updated on 18 UTC of 31 January 2024</i></p>
<p><b>2. Satellite Images</b></p>	<p>The satellite image shows scattered low cloud cover over the country.</p>  <p><i>Figure: Infrared Channel (IR) left and Visible channel (VS) right updated on 31 January 2024</i></p>
<p><b>3. Indian Meteorological Department (IMD)</b></p>	<p><b>31st January 2024:</b> Thunderstorms accompanied with lightning and hail, very likely at isolated places over Sub-Himalayan West Bengal and Sikkim.  <b>1 to 4th February 2024.</b> No server warning.</p>



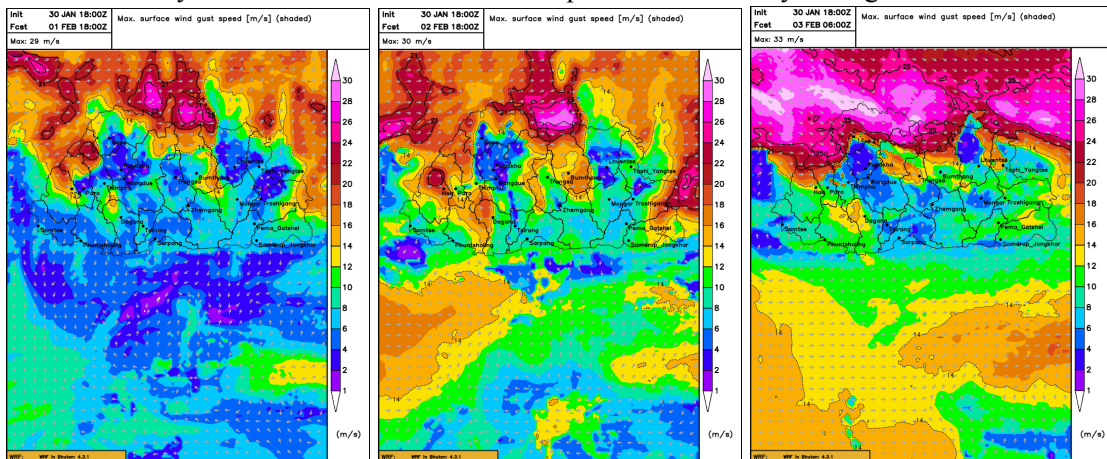
**Weather Research and Forecasting Model (WRF)**

**Precipitation:** Shows isolated light rainfall/snowfall likely over northern, western and central parts of the country during the next 72 hours.



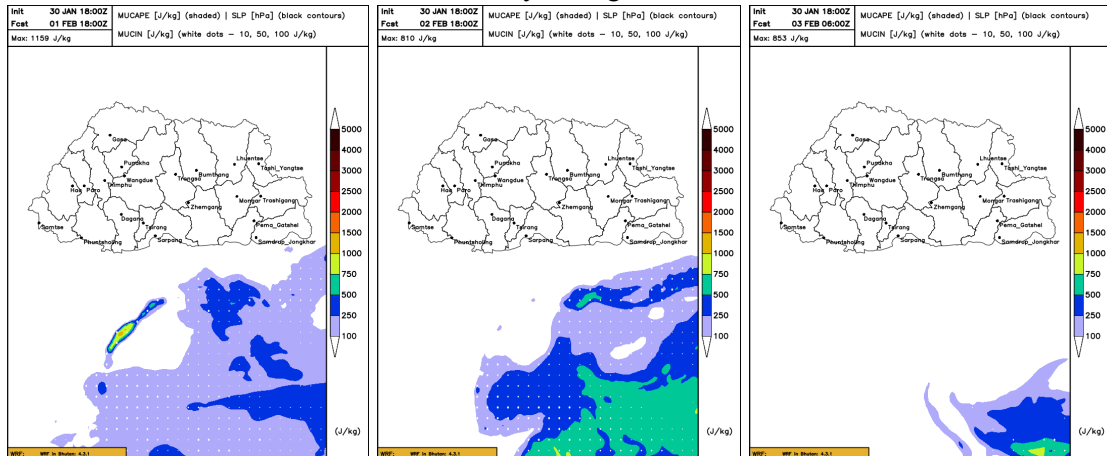
*Figure: 24-hour total precipitation dated at 18 UTC, 30 January 2024*

**Wind:** Gusty winds are likely over the Western and Northern parts of the country during the next 72 hours.



*Figure: Wind Gust updated at 18 UTC, 30 January 2024*

**Thunderstorms:** No severe thunderstorms over the country during the next 72 hours.



*Figure: Mucape updated at 18 UTC, 30 January 2024*



ཨ། རྒྱལ་ཡོངས་ཚུ་དབྱེད་དང་གནམ་གཤིས་རིག་པའི་སློབ་ཁྲིམས།  
NATIONAL CENTRE FOR HYDROLOGY AND METEOROLOGY  
THIMPHU: BHUTAN

*“Centre of excellence in Hydrology, Meteorology and Cryosphere Science and Services”*

