



ཨཱ། རྒྱལ་ཡོངས་ཚུ་དབྱེད་དང་གནས་གཤིས་རིག་པའི་རྩེ་བ།  
NATIONAL CENTRE FOR HYDROLOGY AND METEOROLOGY  
THIMPHU: BHUTAN

“Centre of excellence in Hydrology, Meteorology and Cryosphere Science and Services”



### Weather Analysis and Report

Date and time of issue: 10 November 2024, 10:00 AM

The forecast is valid for 72 hours from the time of issue

Region	Forecast Point	11 November	12 November	13 November
		Monday	Tuesday	Wednesday
Northern	Gasa	Partly cloudy	Partly cloudy	Partly cloudy
North-Eastern	Lhuentse, Tashi Yangtse	Partly cloudy	Partly cloudy	Partly cloudy
Central	Trongsa, Bumthang	Partly cloudy	Partly cloudy	Partly cloudy
Western	Haa	Partly cloudy	Partly cloudy	Partly cloudy
	Paro, Thimphu	Partly cloudy	Partly cloudy	Partly cloudy
	Punakha, Wangdue Phodrang	Partly cloudy	Partly cloudy	Partly cloudy
South-Western	Phuentsholing	Partly cloudy	Mostly cloudy	Partly cloudy
	Samtse	Partly cloudy	Mostly cloudy	Partly cloudy
	Sarpang	Partly cloudy	Partly cloudy	Partly cloudy
	Dagana, Tsirang	Partly cloudy	Partly cloudy	Partly cloudy
South-Eastern	Zhemgang	Partly cloudy	Mostly cloudy	Partly cloudy
	Mongar	Partly cloudy	Mostly cloudy	Partly cloudy
	Tashigang	Partly cloudy	Partly cloudy	Partly cloudy
	Pema Gatshel	Partly cloudy	Partly cloudy	Partly cloudy
	Samdrup Jongkhar	Partly cloudy	Partly cloudy	Partly cloudy

Tel: +975 02 33 5578/+975 7745263

2, Toll free: 1030 (for landlines and b-mobile users)

Web site: [www.nchm.gov.bt](http://www.nchm.gov.bt), Email: [wfc@nchm.gov.bt](mailto:wfc@nchm.gov.bt), Post Box: 207, Thimphu: Bhutan



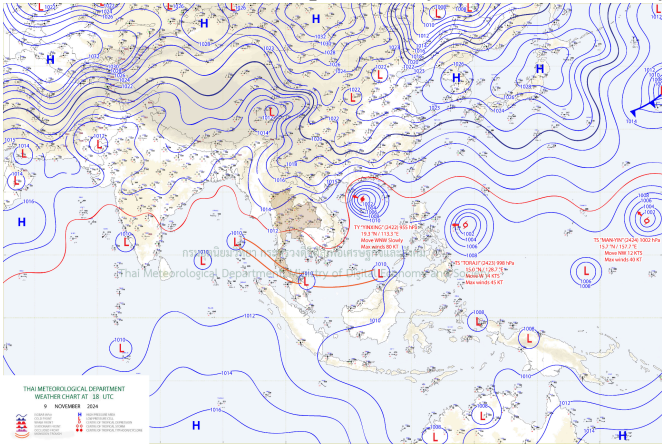
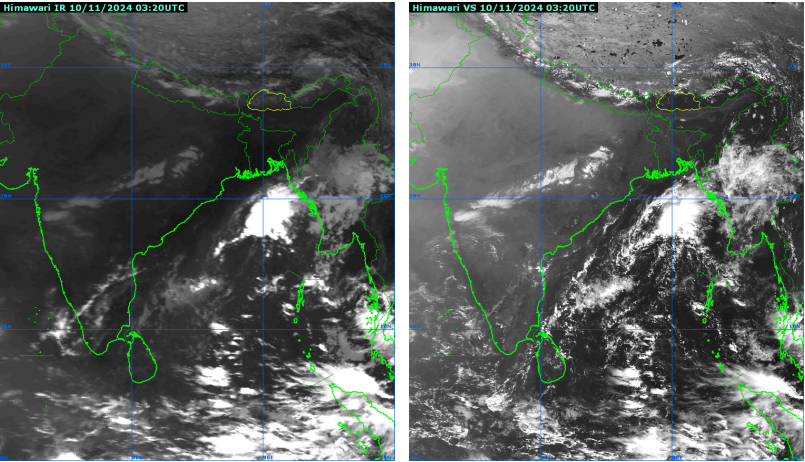
ཨ། རྒྱལ་ཡོངས་ཚུ་དབྱེད་དང་གནམ་གཤིས་རིག་པའི་ལྷན་ཁག།

NATIONAL CENTRE FOR HYDROLOGY AND METEOROLOGY  
THIMPHU: BHUTAN

“Centre of excellence in Hydrology, Meteorology and Cryosphere Science and Services”



### Weather Observation and Analysis

1. Meteorological Observing Stations	Yesterday, stations across the country observed partly cloudy weather over the country.
2 Surface Charts	<p>The surface Chart below shows Low pressure systems over the Bay of Bengal.</p>  <p>Figure: Surface Chart Analysis updated on 18 UTC of 9th November 2024</p>
2. Satellite Images	<p>The satellite image shows the clear weather over the country.</p>  <p>Figure: Infrared Channel (IR) left and Visible channel (VS) right updated on 10th November 2024</p>
3. Indian Meteorological Department (IMD)	10th- 16th November 2024:- No severe weather warning.

Tel: +975 02 33 5578/+975 7745263

2, Toll free: 1030 (for landlines and b-mobile users)

Web site: [www.nchm.gov.bt](http://www.nchm.gov.bt), Email: [wfer@nchm.gov.bt](mailto:wfer@nchm.gov.bt), Post Box: 207, Thimphu: Bhutan

## Weather Research and Forecasting Model (WRF)

**Precipitation:** Partly cloudy weather is expected over the country during the next 3 days.

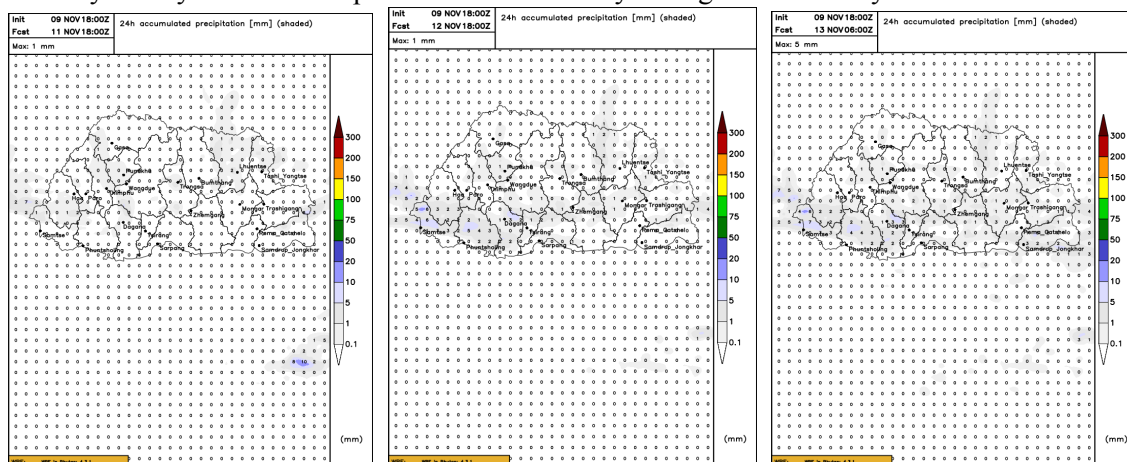


Figure: 24-hour total precipitation dated at 18 UTC, 09th November 2024

**Wind:** Gusty winds likely over Northern parts of the country during the next 3 days.

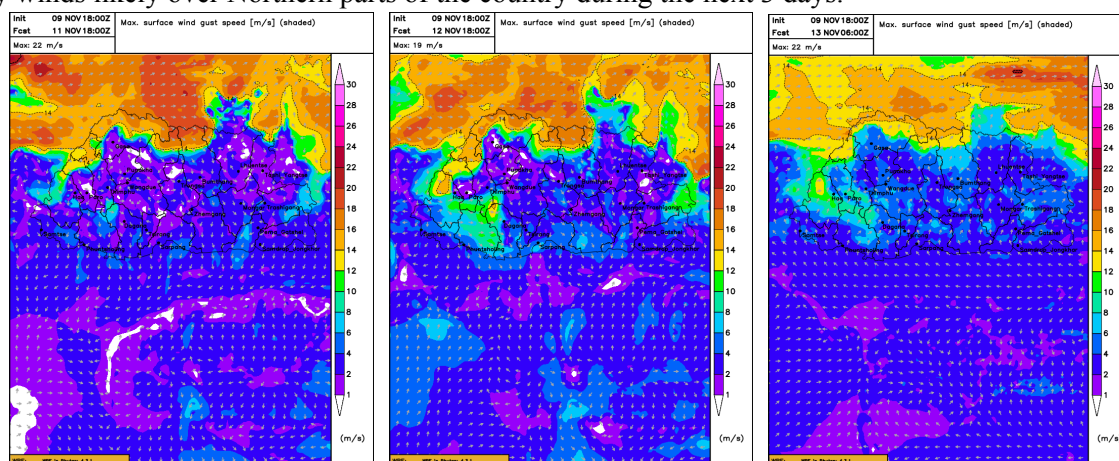
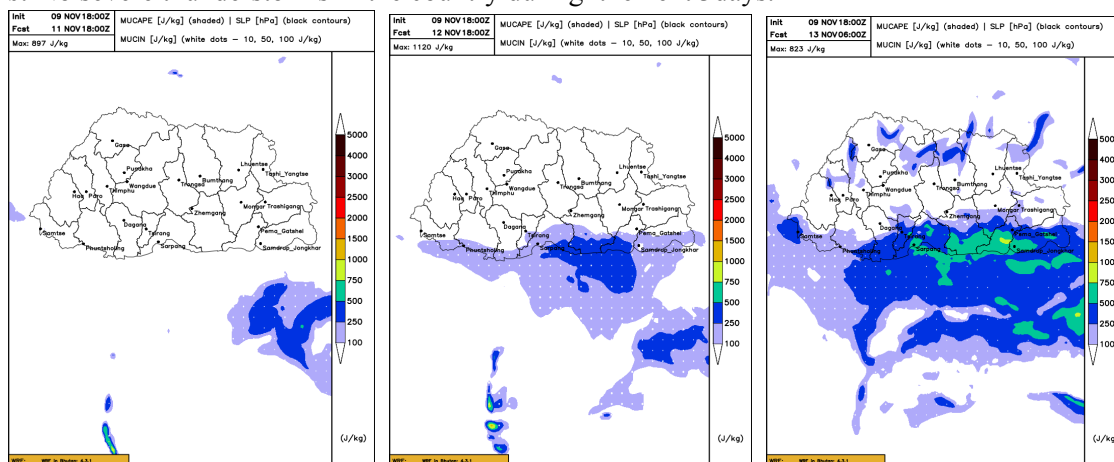


Figure: Wind Gust updated at 18 UTC, 09th November 2024

**Thunderstorms:** No severe thunderstorms in the country during the next 3 days.



*Figure: Mucape updated at 18 UTC, 09th November 2024*



ཨ། རྒྱལ་ཡོངས་ཚུ་དབྱེད་དང་གནས་གཤིས་རིག་པའི་སྡེ་བ།  
NATIONAL CENTRE FOR HYDROLOGY AND METEOROLOGY  
THIMPHU: BHUTAN

*“Centre of excellence in Hydrology, Meteorology and Cryosphere Science and Services”*

