

1. Introduction

Hydrology and Water Resources Services Division (HWRSD) is one of the four Divisions of the Centre, responsible for generating and disseminating information and services related to hydrology and water resources.

The Division collects and archives daily data from river gauging stations located across the country, to keep updated on the status of the flow, the Division is coming up with Monthly Flow Monitoring Report in selected hydrological stations located in different river basins. Currently, following stations (figure 1) are selected for monthly monitoring of the flow;

1. Lungtenphu station in Wangchhu,
2. Kerabari station in Punatsangchhu basin
3. Wangdirapids station in Punatsangchhu basin
- 4. Kurjey station in Chamkharchhu basin**
5. Kurizampa station in Kurichhu, Manas basin
6. Sumpa station in Kurichhu, Manas basin
7. Panbang station in Dangmechhu, Manas basin

The main objective of the report is to understand and keep updated flow status of the river and further provide information on the abnormal data observation while comparing with the historical flow data.

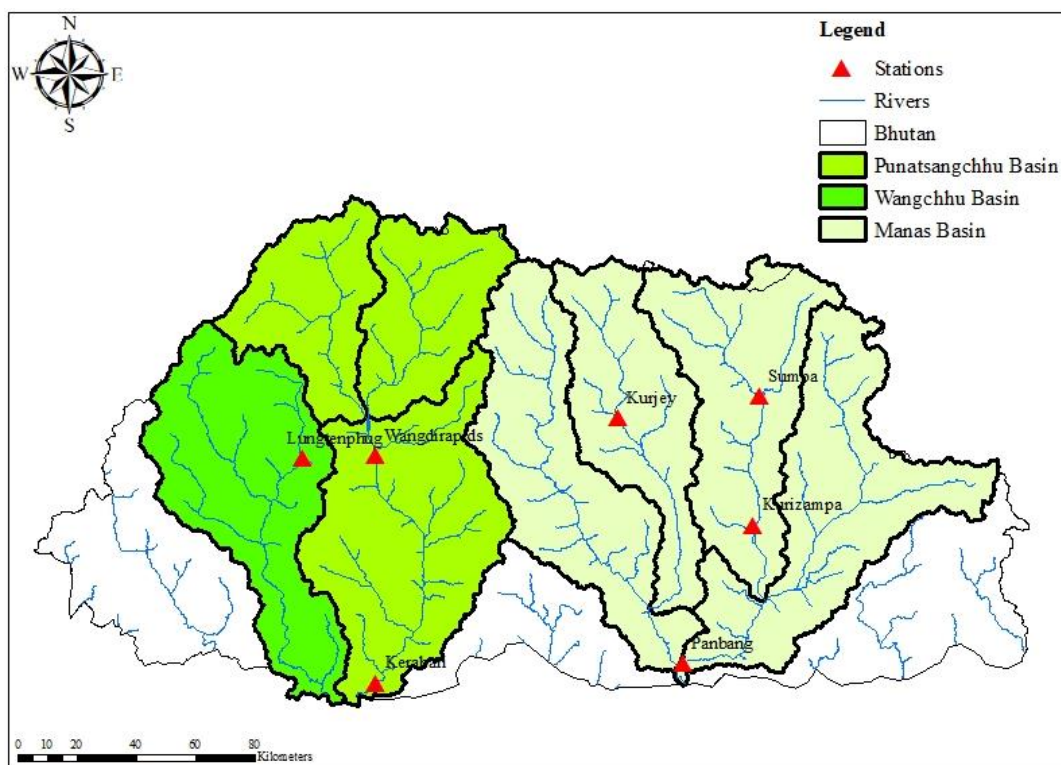


Figure 1 Map showing the selected stations for Flow monitoring

2. Methodology

The flow of April 2023 is compared to the flow of historical April months. The historical flow data is available from 1991 to 2022. The measures of dispersion such as mean, maximum and minimum flows are computed to make comparison.

3. Observation

The mean flow recorded for the month of April 2023 was $24.19\text{m}^3/\text{s}$ which is higher than the mean Historical April months (i.e., $22.16\text{m}^3/\text{s}$). Maximum flow of April 2023 (i.e., $38.9\text{m}^3/\text{s}$) was observed to be lower than the maximum flow observed in the past April months (i.e., $67.52\text{m}^3/\text{s}$). Meanwhile Minimum flow of April 2023 (i.e., $14.19\text{m}^3/\text{s}$) was observed to be higher than the past April months ($10.67\text{m}^3/\text{s}$).

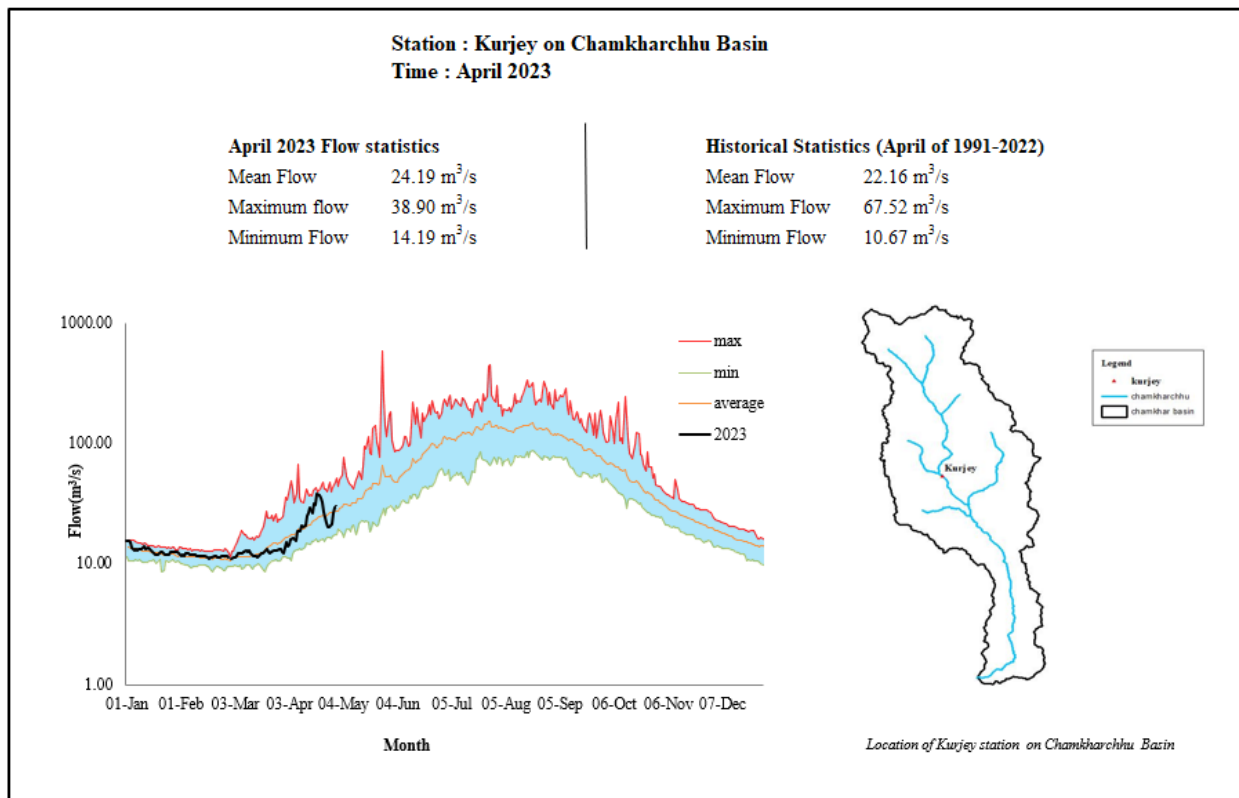


Figure 2 Daily flow status of April 2023 as compared to historical daily flow data of April months

Table 1 Table of flow statistics comparison April of 2023 and historical April months (1991-2022).

Statistics	April 2023 (m^3/s)	Historical April (1991-2022) m^3/s
Mean flow	24.19	22.16
Max flow	38.90	67.52
Min flow	14.19	10.67

4. Summary

1. The mean flow of April 2023 is observed to be $2.03\text{m}^3/\text{s}$ higher than the mean of Normal flow (Historical April).
2. The Maximum flow for April 2023 is observed to lower by $28.62\text{m}^3/\text{s}$ compared to the Maximum flow observed in the past April months.
3. The Minimum flow of April 2023 was higher by $3.52\text{m}^3/\text{s}$ from the past April months.