

1. Introduction

Hydrology and Water Resources Services Division (HWRSD) is one of the four Divisions of the Center, responsible for generating and disseminating information and services related to hydrology and water resources.

The Division collects and archives daily data from the river gauging station located across the country, to keep updated on the status of the flow, the Division is coming up with Monthly Flow Monitoring Report in selected hydrological stations located in different river basins. Currently, following stations (figure 1) are selected for monthly monitoring of the flow;

1. **Lungtenphu station in Wangchhu,**
2. Kerabari station in Punatsangchhu basin
3. Kurjey station in Chamkharchhu basin and
4. Wangdirapids station in Punatsangchhu basin.

The main objective of the report is to understand and keep updated flow status of the river and further provide information on the abnormal data observation while comparing with the historical flow data.

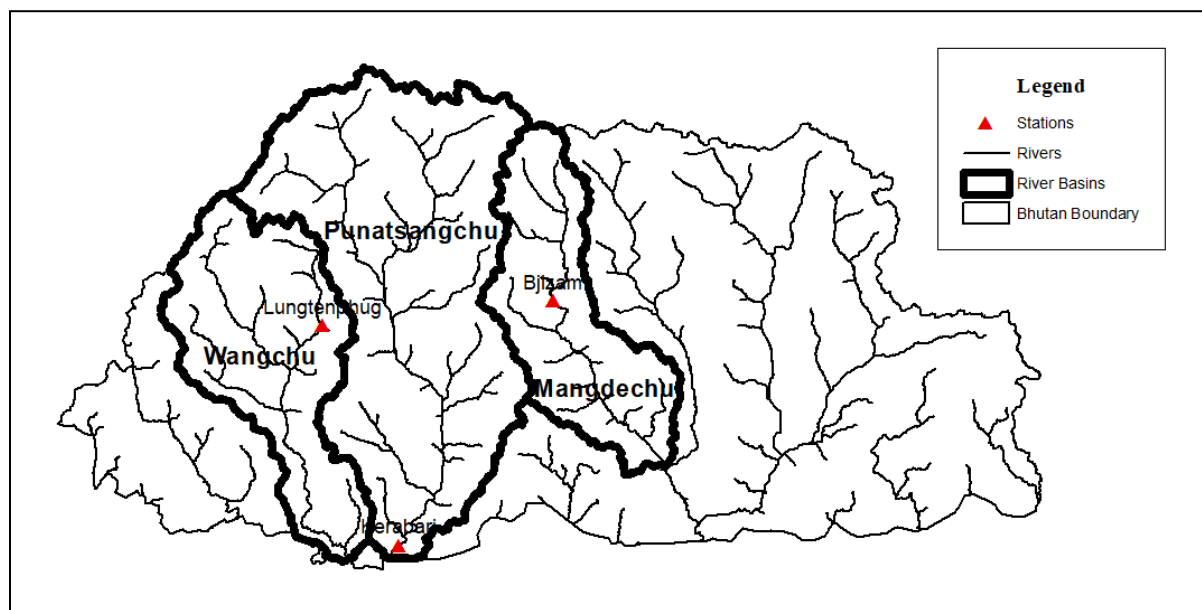


Figure 1 Map showing the selected stations for Flow monitoring

2. Methodology

The flow of November 2021 is compared to the flow of historical November months. The historical flow data is available from 1992 to 2020. The measures of dispersion such as mean, maximum and minimum flows are computed to make comparison.

3. Observation

During the November month, the average flow (i.e. 28.16cumecs) was higher than the average of historical November months (i.e. 23.88cumecs). The maximum flow was observed to be higher than the Maximum flow in November of the past (starting from 1992) while Minimum flow was observed to be higher in November 2021 as compared to the Minimum flow during November observed in the past.

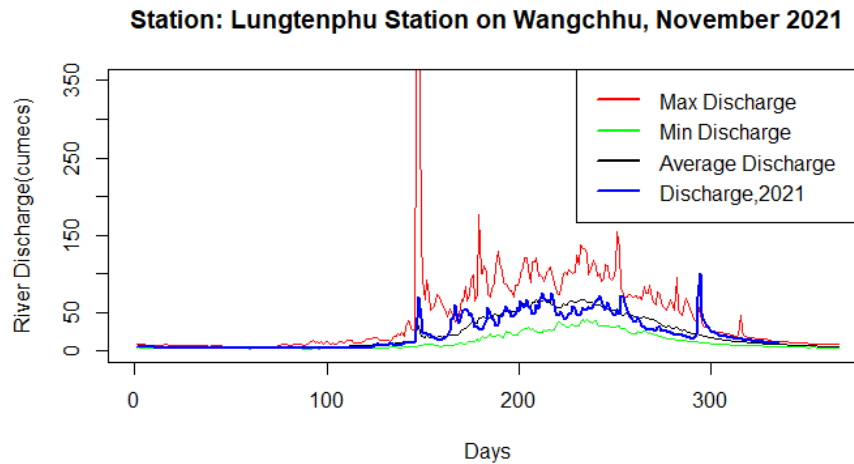


Figure 2 Daily flow status of November 2021 as compared to historical daily flow data of November months

Table 1 Table of flow statistics comparison November of 2021 and historical November months (1992-2020).

Statistics	November 2021 (m ³ /s)	Historical November (1992-2020) m ³ /s
Mean flow	28.16	23.88
Max flow	99.94	94.46
Min flow	16.38	8.82

4. Summary

1. The mean flow of November 2021 is observed to be 4.28m³/s higher as compared to the mean of Normal flow (Historical November).
2. The minimum flow is observed to be higher by 7.56m³/s for November 2021 compared to the minimum flow observed in the past November months.
3. The Maximum flow of November 2021 was observed to be higher than the maximum flow observed in the past November months by 5.48m³/s.