



རྒྱལ་ཡོངས་ཚུན་བྱུང་དང་གནམ་གཤིས་རིག་པའི་ལྷན་ཁག།

NATIONAL WEATHER AND FLOOD WARNING CENTER  
NATIONAL CENTER FOR HYDROLOGY & METEOROLOGY  
THIMPHU



**Issue Date: 27th May, 2021**

**Issue Time: 04:00 PM**

**Report on the Severe Cyclonic Storm ‘YAAS’- Update 3**

The Deep Depression (Remnant of Very Severe Cyclonic Storm ‘YAAS’) over northeastern India has weakened into a Depression. The system is very likely to further weaken into a Well Marked Low pressure area during the next 12 hours.

The table below shows probability of cyclogenesis (Bhutan time is 6 hours plus of UTC)

<b>Date/Time (UTC)</b>	<b>Category of Cyclonic disturbance</b>
24.05.2021/0000	Cyclonic storm
24.05.2021/0600	Cyclonic Storm
24.05.2021/1200	Severe Cyclonic storm
24.05.2021/1800	Severe Cyclonic storm
25.05.2021/0600	Severe Cyclonic storm
25.05.2021/1200	Very Severe Cyclonic storm
26.05.2021/0000	Very Severe Cyclonic storm
26.05.2021/0600	Very Severe Cyclonic storm
27.05.2021/0600	Deep Depression
27.05.2021/0600	Depression



ལྷན་ཁོངས་ཚུན་བྱུང་དང་གནམ་གཤིས་རིག་པའི་ལྷན་ཁོངས་

NATIONAL WEATHER AND FLOOD WARNING CENTER  
NATIONAL CENTER FOR HYDROLOGY & METEOROLOGY  
THIMPHU

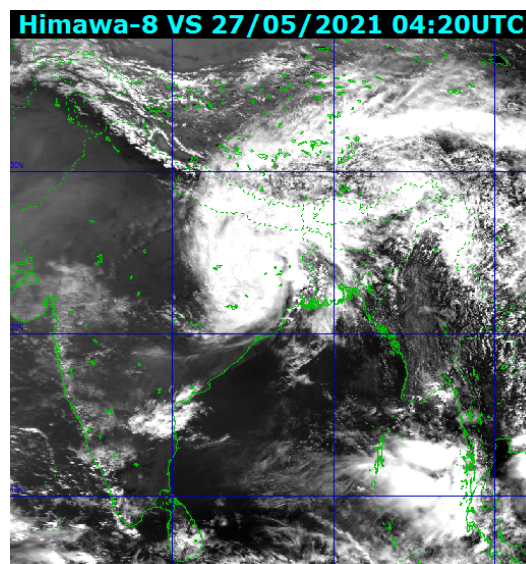
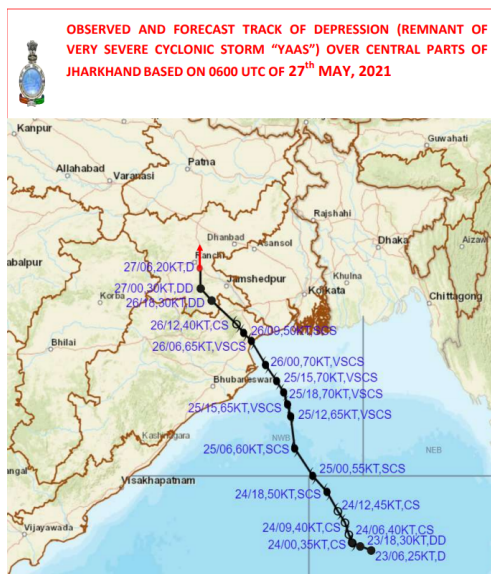


Figure: Observed and forecast track of cyclone (Source: IMD) and Satellite image, VS as of 16:00 BST

### Impact over Bhutan

Cloudy to mostly cloudy with light rain is likely over the country during the next 24 hours . Thunder and lightning over isolated places of southern, central & eastern parts of the country is also likely during the next 72 hours.

Updates will be issued if there are any significant changes in the forecast.

For more information please contact +975 335578, +975 339673, +975 77452632, or visit our website [www.nchm.gov.bt](http://www.nchm.gov.bt)

**National Center for Hydrology and Meteorology  
Thimphu**