



ཀྲུལ་ཡོངས་ཚུ་དབྱེད་དང་གནམ་གཤིས་རིག་པའི་ལྷན་ཁག།
NATIONAL CENTER FOR HYDROLOGY AND METEOROLOGY
THIMPHU: BHUTAN

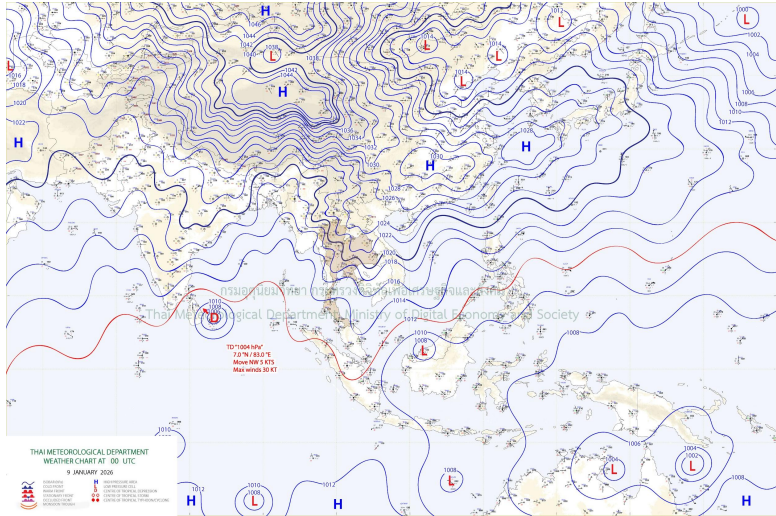
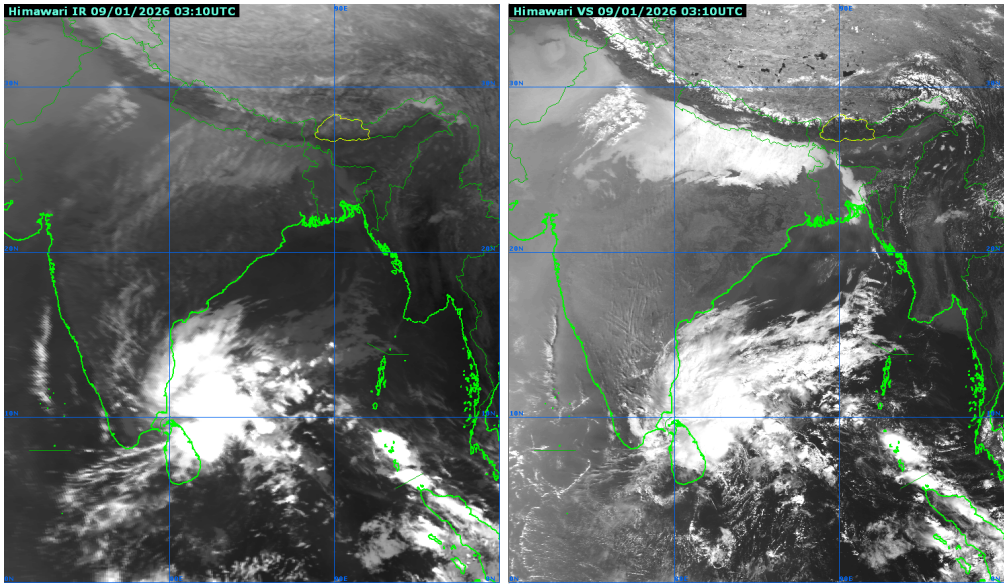
"Centre of Excellence in Hydrology, Meteorology and Cryosphere Science and Services"



Weather Analysis And Report

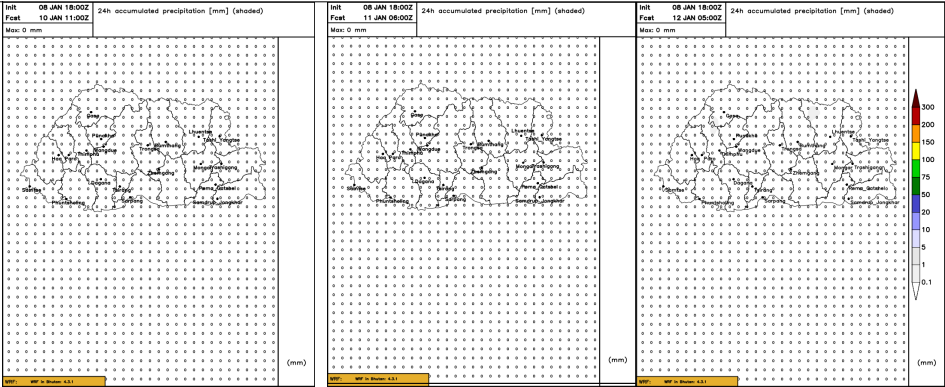
Date and time of issue: 09 January 2026, 10:00 AM

Region	Forecast Point	10 January	11 January	12 January
		Saturday	Sunday	Monday
Northern	Gasa	Partly cloudy	Partly cloudy	Partly cloudy
	Laya	Partly cloudy	Partly cloudy	Partly cloudy
Western	Thimphu	Partly cloudy	Partly cloudy	Partly cloudy
	Paro	Partly cloudy	Partly cloudy	Partly cloudy
	Haa	Mostly cloudy	Partly cloudy	Partly cloudy
	Wangdue Phodrang	Partly cloudy	Partly cloudy	Partly cloudy
	Phobjikha	Partly cloudy	Partly cloudy	Mostly cloudy
	Punakha	Partly cloudy	Partly cloudy	Partly cloudy
Southern	Samtse	Partly cloudy	Partly cloudy	Partly cloudy
	Phuentsholing	Partly cloudy	Partly cloudy	Partly cloudy
	Sarpang	Partly cloudy	Partly cloudy	Partly cloudy
	Pema Gatshel	Partly cloudy	Partly cloudy	Partly cloudy
	Deothang	Partly cloudy	Partly cloudy	Partly cloudy
Eastern	Mongar	Mostly cloudy	Partly cloudy	Partly cloudy
	Kanglung	Mostly cloudy	Partly cloudy	Partly cloudy
	Trashiyangtse	Mostly cloudy	Mostly cloudy	Partly cloudy
	Lhuntse	Mostly cloudy	Partly cloudy	Mostly cloudy
Central	Trongsa	Partly cloudy	Partly cloudy	Mostly cloudy
	Langthil	Partly cloudy	Partly cloudy	Partly cloudy
	Bumthang	Partly cloudy	Mostly cloudy	Mostly cloudy
	Dagana	Mostly cloudy	Partly cloudy	Partly cloudy
	Zhemgang	Mostly cloudy	Mostly cloudy	Partly cloudy
	Tsirang	Mostly cloudy	Partly cloudy	Partly cloudy

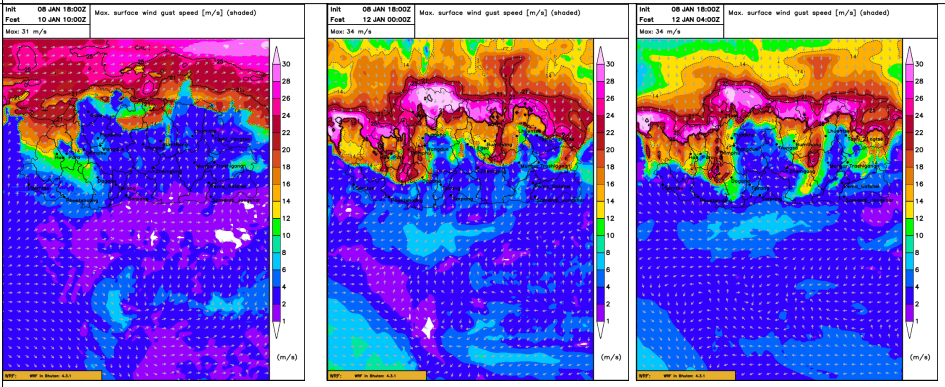
Weather Observation and Analysis	
face	Yesterday, stations across the country observed partly to mostly cloudy weather condition. No rainfall activity was recorded during the last 24 hours.
2. Surface Charts	<p>The surface chart shows deep depression over southwest Bay of Bengal.</p>  <p>Figure: Weather chart updated at 00 UTC, 09 January 2026 ThaiMet</p>
3. Satellite Images	<p>The satellite images shows low level clouds over the country.</p>  <p>Figure: Infrared Channel (IR) left and Visible channel (VS) right updated on 09 January 2026</p>
4. Indian Meteorological Department (IMD)	<p>09 - 12 January 2026: Dense Fog very likely at isolated places over Assam & Meghalaya, Bihar, Himachal Pradesh, Nagaland, Manipur, Mizoram and West Bengal & Sikkim.</p> <p>13 - 14 January 2026: No severe weather warning.</p> <p>Meteorological Analysis</p> <ul style="list-style-type: none"> - The deep depression over southwest Bay of Bengal and adjoining East Equatorial Indian Ocean moved nearly northwestwards with a speed of 15 kmph during past 6 hours. And it is very likely to intensify further during next 12 hours, move northwestwards and cross Sri Lanka coast between Pottuvil and Trincomalee around evening/night of tomorrow, the 9th January 2026. -The Western disturbance as an upper air cyclonic circulation over north Punjab & neighbourhood at 3.1 km above mean sea level persists. -A fresh Western Disturbance as a trough in middle tropospheric westerlies with its axis at 5.8 km above mean sea level runs roughly along Long. 68°E to the north of Lat. 30°N. -Subtropical westerly Jet Stream with core winds of the order of 135 knots at 12.6 km above mean sea level prevail over northwest India. -The Upper air cyclonic circulation over northeast Assam & neighbourhood at 3.1 km above mean sea level persists.

Weather Research and Forecasting Model

Precipitation: Partly to mostly cloudy weather is expected over the country during the next three days.



Wind : Wind gust likely over the isolated places of the northern parts of the country during the next three days.



Thunderstorms: No severe thunderstorms over the country during the next three days.

