



ལྷ་ཡོངས་ཁྱད་པར་གནས་གཤིས་རིག་པའི་སྡེ་བ།
NATIONAL CENTER FOR HYDROLOGY AND METEOROLOGY
THIMPHU: BHUTAN



"Centre of Excellence in Hydrology, Meteorology and Cryosphere Science and Services"

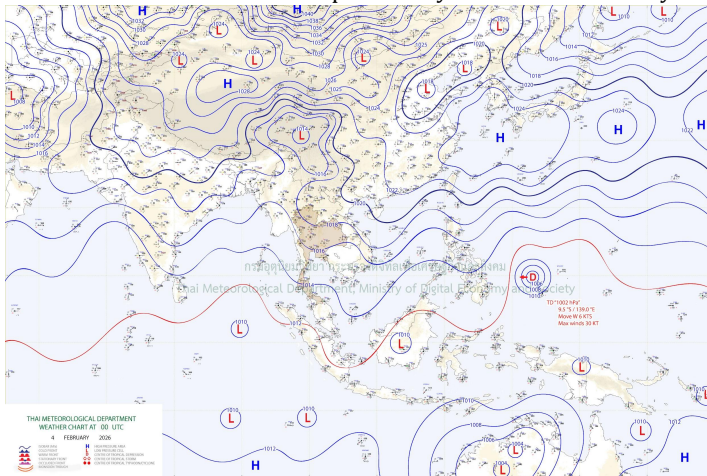
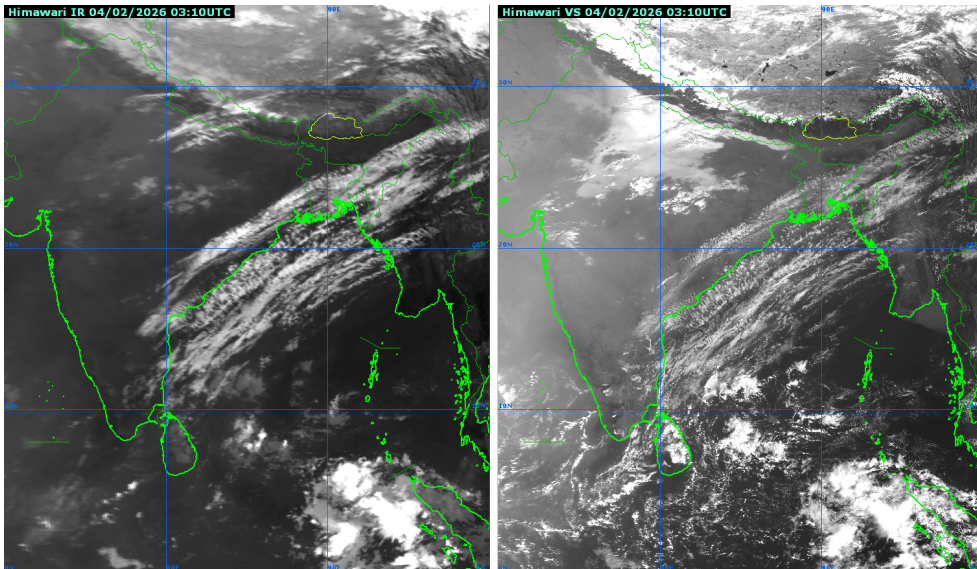
Weather Analysis And Report

Date and time of issue: 04 February 2026, 10:00 AM

Weather Forecast Summary

05-07 February: Partly to mostly cloudy weather is expected over the country with light rain/snow over northern and high-altitude areas towards night hours. Wind gust likely over the isolated places over northern and western parts of the country on 5th February.

Region	Forecast Point	05 February	06 February	07 February
		Thursday	Friday	Saturday
Northern	Gasa	Mostly cloudy	Mostly cloudy with light rain/snow	Mostly cloudy with light rain/snow
	Laya	Mostly cloudy	Mostly cloudy	Mostly cloudy with light rain/snow
Western	Thimphu	Partly cloudy	Mostly cloudy	Mostly cloudy
	Paro	Partly cloudy	Partly cloudy	Mostly cloudy
	Haa	Partly cloudy	Partly cloudy	Partly cloudy with light rain/snow
	Wangdue Phodrang	Partly cloudy	Mostly cloudy	Mostly cloudy
	Phobjikha	Mostly cloudy	Mostly cloudy	Mostly cloudy
	Punakha	Partly cloudy	Partly cloudy	Mostly cloudy
Southern	Samtse	Partly cloudy	Mostly cloudy	Mostly cloudy
	Phuentsholing	Partly cloudy	Mostly cloudy	Mostly cloudy
	Sarpang	Partly cloudy	Mostly cloudy	Mostly cloudy
	Pema Gatshel	Partly cloudy	Partly cloudy	Mostly cloudy
	Deothang	Partly cloudy	Mostly cloudy	Partly cloudy
Eastern	Mongar	Partly cloudy	Mostly cloudy	Partly cloudy
	Kanglung	Mostly cloudy	Mostly cloudy	Partly cloudy
	TrashiYangtse	Mostly cloudy	Partly cloudy	Mostly cloudy
	Lhuntse	Mostly cloudy	Partly cloudy	Mostly cloudy
Central	Trongsa	Mostly cloudy	Mostly cloudy	Mostly cloudy
	Langthil	Mostly cloudy	Partly cloudy	Partly cloudy
	Bumthang	Mostly cloudy	Mostly cloudy	Partly cloudy with light rain/snow
	Dagana	Mostly cloudy	Partly cloudy	Mostly cloudy
	Zhemgang	Mostly cloudy	Mostly cloudy	Mostly cloudy
	Tsirang	Mostly cloudy	Partly cloudy	Mostly cloudy

Weather Observation and Analysis	
1.Meteorological observing stations	Yesterday, stations across the country observed sunny to partly cloudy weather while few stations have experienced mostly cloudy condition over the country. No rainfall activity was recorded during the last 24 hours.
2. Surface Charts	<p>The surface chart shows low pressure system over the country .</p>  <p>Figure: Weather chart updated at 00 UTC, 04 February 2026 ThaiMet</p>
3. Satellite Images	<p>The satellite images shows scattered high & medium level clouds over the country.</p>  <p>Figure: Infrared Channel (IR) left and Visible channel (VS) right updated on 04 February 2026</p>
4. Indian Meteorological Department (IMD)	<p>4th february 2026 : Dense Fog very likely at isolated places over Himachal Pradesh, Sub Himalayan West Bengal & Sikkim 5th - 10th February 2026: No severe weather warning.</p> <p>Meteorological Analysis</p> <ul style="list-style-type: none"> -The trough in easterlies off south Kerala to south Karnataka coast seen as a cyclonic circulation over Lakshadweep & adjoining southeast Arabian sea at 0.9 km above mean sea level persists. -Subtropical westerly Jet Stream with core winds of the order of 130 knots at 12.6 km above mean sea level continues to prevail over Northeast India. -A fresh western disturbance is likely to affect western Himalayan region from the night of 05th February 2026. -Another fresh western disturbance is likely to affect western Himalayan region from the night of 08th February
Weather Research and Forecasting Model	

Precipitation: Partly to mostly cloudy weather is expected over the country with light rain/snow over northern and high-altitude areas during the next 3 days.

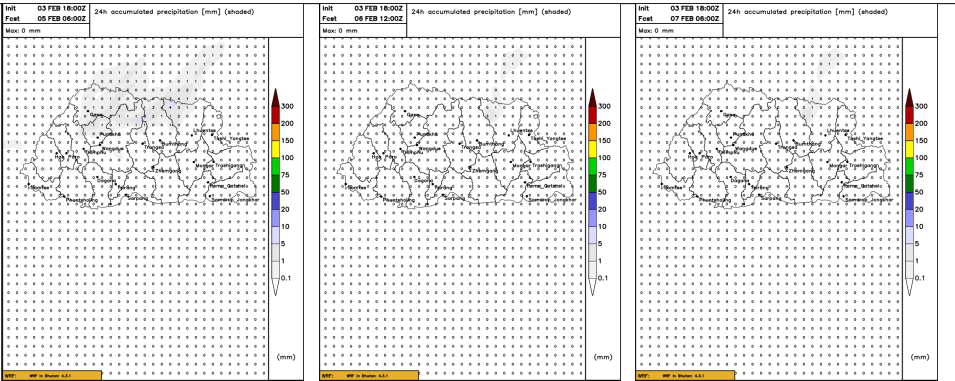


Figure: 24-hour total precipitation dated at 18:00 UTC, 03 February 2026

Wind : Wind gust likely over the isolated places over northern and western parts of the country on 5th February.

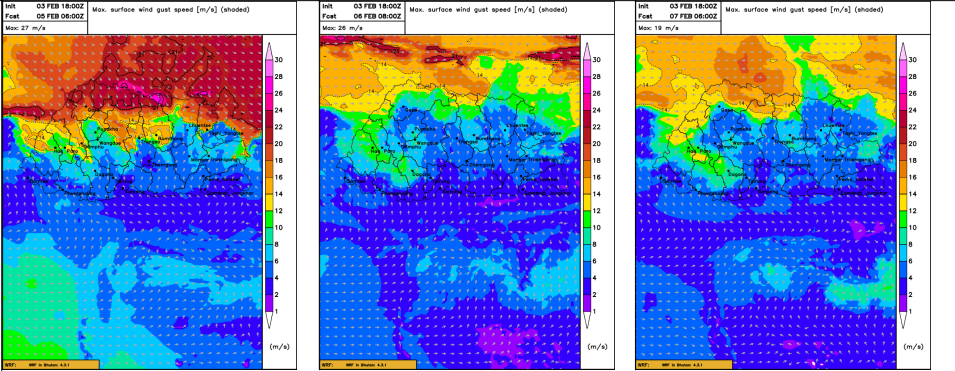


Figure: Wind Gust updated at 18:00 UTC, 03 February 2026

Thunderstorms: No severe thunderstorms over the country during the next 3 days.

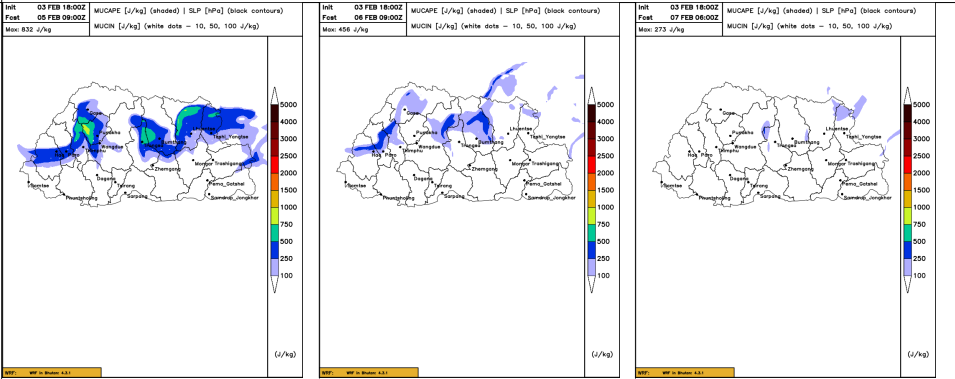


Figure: Mucapc updated at 18:00 UTC, 03 February 2026