



རྒྱལ་ཡོངས་ཚུན་ཕྱད་དང་གནམ་གཤིས་རིག་པའི་ལྷན་ཁག
NATIONAL CENTRE FOR HYDROLOGY AND METEOROLOGY
 THIMPHU: BHUTAN



"Centre of Excellence in Hydrology, Meteorology and Cryosphere Science and Services"

Date and time of issue: 22 May 2026, 10:00 AM

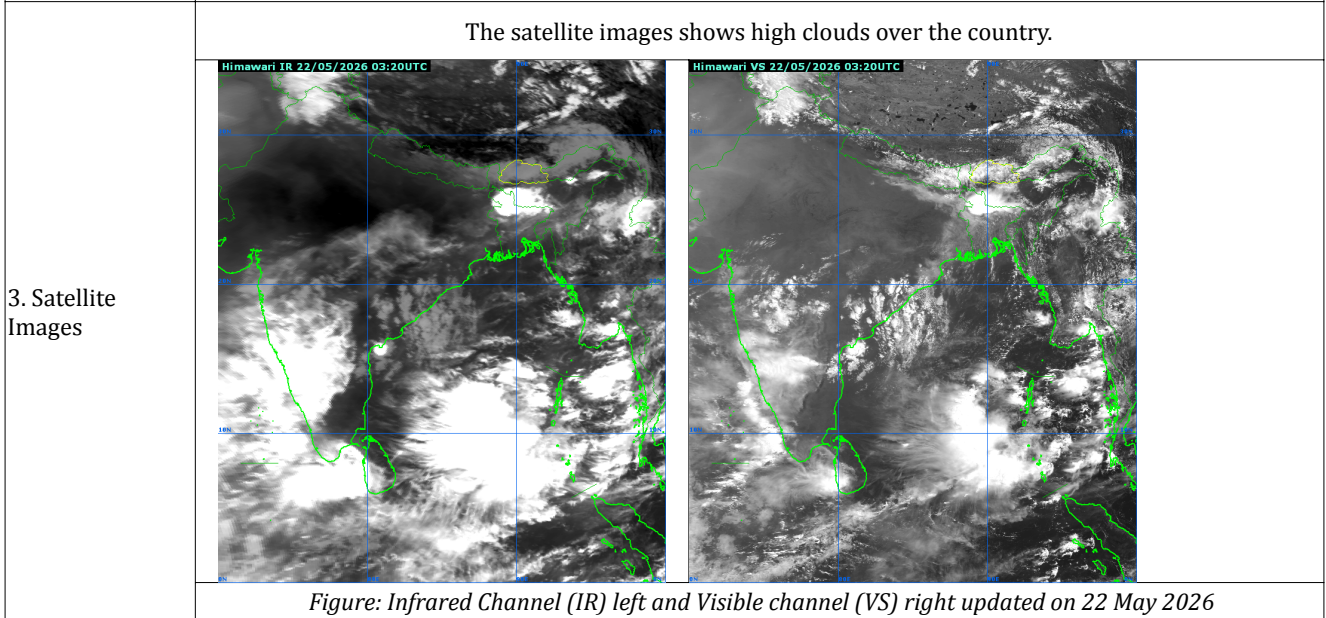
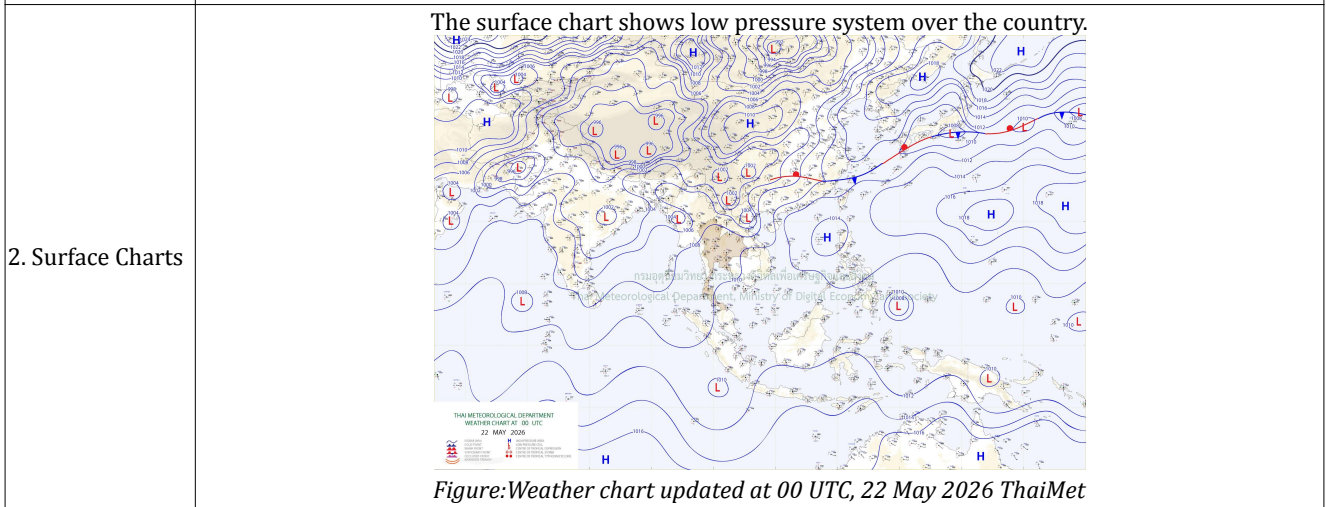
Weather Forecast Summary

23 -25 May: Mostly cloudy to cloudy weather with light to moderate rainfall is expected across the country, with heavy rainfall likely at southern and isolated places of central regions. Thunderstorms accompanied by lightning and wind gust are likely at isolated places during the next three days.

| Region | Forecast Point | 23 May | 24 May | 25 May |
|----------|------------------|-------------------------------|-------------------------------|-------------------------------|
| | | Saturday | Sunday | Monday |
| Northern | Gasa | Mostly cloudy with light rain | Mostly cloudy with light rain | Mostly cloudy with light rain |
| | Laya | Mostly cloudy with light rain | Mostly cloudy with light rain | Mostly cloudy with light rain |
| Western | Thimphu | Cloudy with light rain | Mostly cloudy with light rain | Mostly cloudy with light rain |
| | Paro | Cloudy with light rain | Mostly cloudy with light rain | Mostly cloudy with light rain |
| | Haa | Cloudy with light rain | Mostly cloudy with light rain | Mostly cloudy with light rain |
| | Wangdue Phodrang | Mostly cloudy with light rain | Mostly cloudy with light rain | Mostly cloudy with light rain |
| | Phobjikha | Mostly cloudy with light rain | Mostly cloudy with light rain | Mostly cloudy with light rain |
| | Punakha | Mostly cloudy with light rain | Mostly cloudy with light rain | Mostly cloudy with light rain |
| Southern | Samtse | Cloudy with moderate rain | Cloudy with moderate rain | Cloudy with moderate rain |
| | Phuentsholing | Cloudy with heavy rain | Cloudy with heavy rain | Cloudy with moderate rain |
| | Sarpang | Cloudy with moderate rain | Cloudy with heavy rain | Cloudy with heavy rain |
| | Pema Gatshel | Cloudy with moderate rain | Cloudy with moderate rain | Cloudy with moderate rain |
| | Deothang | Cloudy with moderate rain | Cloudy with heavy rain | Cloudy with moderate rain |
| Eastern | Mongar | Cloudy with light rain | Cloudy with light rain | Mostly cloudy with light rain |
| | Kanglung | Cloudy with light rain | Cloudy with moderate rain | Mostly cloudy with light rain |
| | TrashiYangtse | Cloudy with light rain | Cloudy with light rain | Cloudy with light rain |
| | Lhuntse | Cloudy with light rain | Cloudy with light rain | Cloudy with light rain |
| Central | Trongsa | Cloudy with light rain | Cloudy with light rain | Cloudy with light rain |
| | Langthil | Cloudy with light rain | Cloudy with light rain | Cloudy with light rain |
| | Bumthang | Cloudy with light rain | Cloudy with light rain | Cloudy with light rain |
| | Dagana | Cloudy with moderate rain | Cloudy with moderate rain | Cloudy with moderate rain |
| | Zhemgang | Cloudy with light rain | Cloudy with moderate rain | Cloudy with light rain |
| | Tsirang | Cloudy with moderate rain | Cloudy with heavy rain | Cloudy with moderate rain |

Weather Observations and Analysis

1. Meteorological observing stations
 Yesterday, stations over the country observed mostly cloudy to cloudy weather with light rainfall in a few places. The highest rainfall recorded was 5 mm at the Zhemgang Meteorological Station during the past 24 hours.
Note: A rainfall accumulation of 5 mm is classified as light rainfall for Zhemgang meteorological station.



22-27 May: Heavy Rainfall very likely at isolated places over Assam & Meghalaya, Arunachal Pradesh, Nagaland, Manipur, Mizoram and Tripura, Sub Himalayan West Bengal & Sikkim.
22-25 May: Heavy to Very Heavy Rainfall likely at isolated places over Sub Himalayan West Bengal & Sikkim, Arunachal Pradesh and Assam & Meghalaya.
22 May 2026 : Thundersquall with wind speed reaching(50-60kmph) very likely at isolated places over Bihar and Gangetic West Bengal.
22 - 27 May 2026 : Thunderstorm accompanied with lightning & gusty winds very likely at isolated places over Assam & Meghalaya, Nagaland, Manipur, Bihar, Mizoram.

Meteorological Analysis;
 *The Northern Limit of Monsoon continues to pass through 6°N/70°E, 6°N/75°E, 7°N/80°E, 9°N/85°E, 12°N/90°E, 14°N/93°E, 16°N/96°E and 17.5°N/98°E .
 *Conditions are favourable for further advance of southwest monsoon into some more parts of southeast Arabian Sea, Comorin Area, southwest and southeast Bay of Bengal, remaining parts of Andaman Sea, and some more parts of eastcentral Bay of Bengal during next 3-4 days.
 *Another Western Disturbance as a trough in westerlies with its axis at 5.8 km above mean sea level now runs roughly along Long. 60°E to the north of Lat. 30°N.
 *The trough now runs from west Bihar to south Odisha across Jharkhand and north Chhattisgarh at 0.9 km above mean sea level.
 *The trough from central Bay of Bengal to Tamil Nadu across southwest Bay of Bengal between 3.1 & 4.5 km above mean sea level persists.
 *The upper air cyclonic circulation over coastal Bangladesh and neighbourhood at 1.5 km above mean sea level persists.
 *The upper air cyclonic circulation over central Assam at 1.5 km above mean sea level persists.

4. Indian Meteorological Department (IMD)

Weather Research and Forecasting Model

Precipitation: Mostly cloudy to cloudy weather with light to moderate rainfall is expected across the country, with heavy rainfall likely at southern and isolated central regions during the next three days.

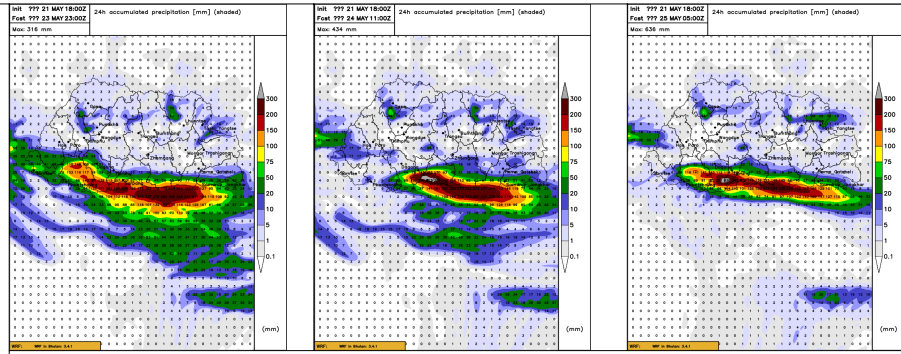


Figure: 24-hour total precipitation dated at 18 UTC, 21 May 2026

Wind : Wind gust likely at isolated places of the country during the next three days.

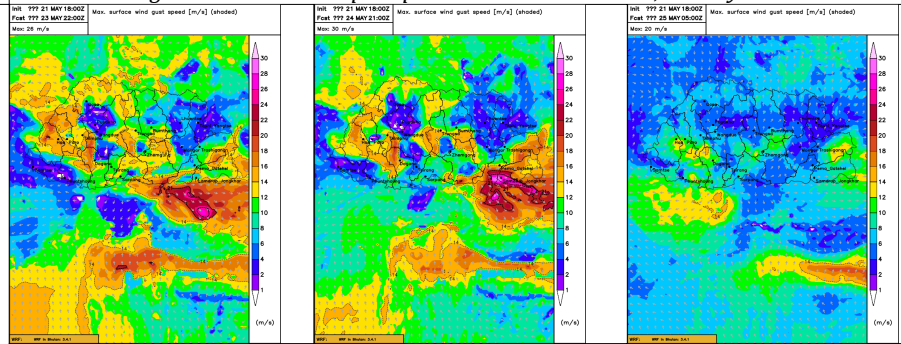


Figure: Wind Gust updated at 18 UTC, 21 May 2026

Thunderstorms: Thunderstorms accompanied with lightning very likely over the isolated places of the country during the next three days.

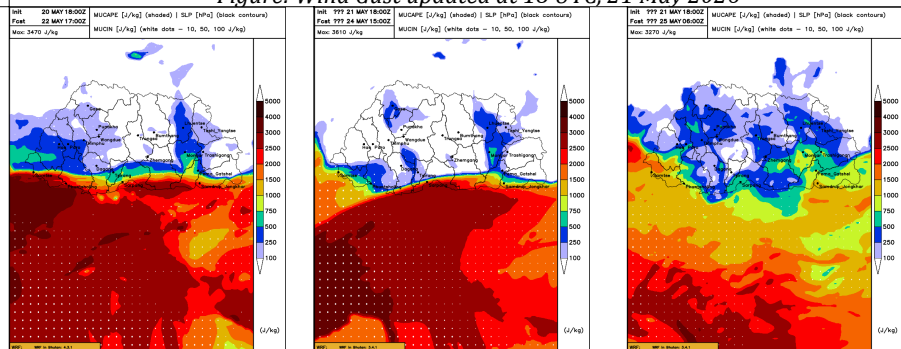


Figure: Mucape updated at 18 UTC, 21 May 2026