



NCHM/NWFWC/FORECAST-14/2022-23/73

Advisory on Heavy Rainfall and Flood

Date and time of issue: 30 June 2023, 4:00 PM

| | |
|--|---|
| <p>Realised weather (23 June - 29 June)</p> | <p>Last week, the weather was partly cloudy to cloudy with light rain in most parts of the country with light to moderate rain in the South-Western and South-Eastern parts of the country. The highest rainfall recorded was 87.3 mm in Phuntsholing (southwest) on 29 June 2023.</p> <div style="text-align: center;"> <p>24 hr accumulated rainfall (mm)</p> </div> <p>Maximum temperature across the country has started to decrease from the mid of last week, whereas minimum temperature has remained mostly constant. The highest temperature observed was 36.0°C for Gelephu on 26 June. while the lowest temperature was 10.0 °C in Gasa on the same day.</p> |
| <p>Salient synoptic features</p> | <ul style="list-style-type: none"> ● A westerly trough is passing over the country. ● The southwest monsoon is active in the region. |
| <p>Rainfall and Flood Advisory</p> | |
| <p>1-2 July: Mostly cloudy to cloudy weather with light rain is expected over the country while Southern parts of the country are likely to receive moderate to heavy rain.</p> <p>3 July: Mostly cloudy to cloudy weather with light to moderate rain is likely over the country with heavy rainfall over the Southern parts of the country.</p> <p>Thunder and lightning are also likely over isolated places of the country during the next three days.</p> <p>Rainfall is expected to continue for the next week.</p> <p>Owing to the active monsoon phase, the continuous rainfall received during the past two weeks, and the forecast of rainfall in the coming days, there are possibilities of riverine floods, flash floods, and localised landslides/mudslides at isolated places in the country.</p> | |

Updates will be issued if there are significant changes in the forecast.

National Centre for Hydrology and Meteorology



ལྷོ། རྒྱལ་ཡོངས་ཚུན་བྱུང་དང་གནམ་གཤིས་རིག་པའི་སྡེ་བ།
NATIONAL CENTRE FOR HYDROLOGY AND METEOROLOGY
THIMPHU: BHUTAN

“Centre of excellence in Hydrology, Meteorology and Cryosphere Science and Services”

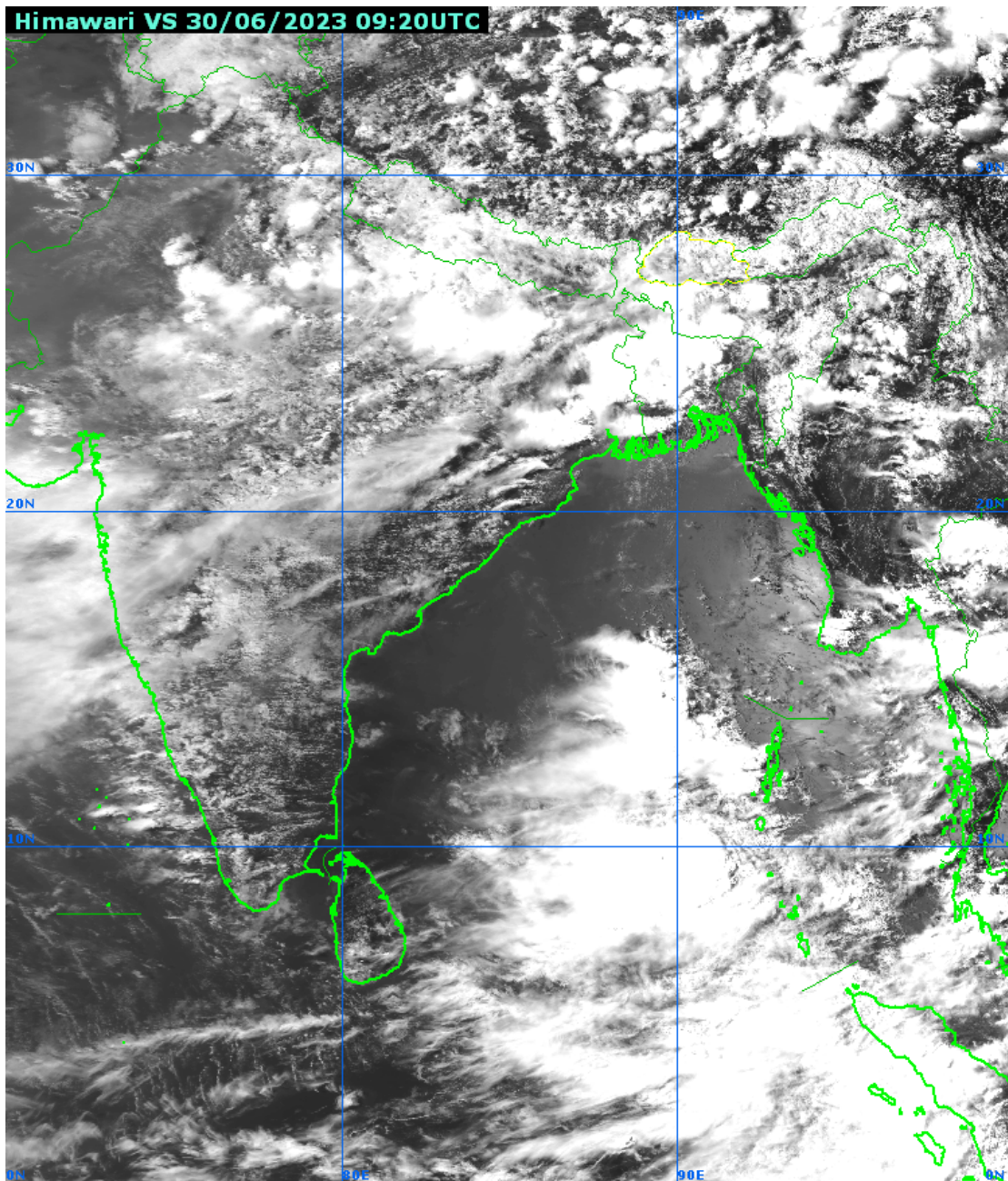


Figure: Himawari visible image updated on 3:20 pm BST, 30 June 2023.