



NCHM/NWFWC/FORECAST-14/2022-23/67

Weather Remarks on Cyclone “Mocha”- Update I

Date and time of issue: 11 May 2023, 5:00 PM

<p>Realised weather (4-10 May 2023)</p>	<p>Last week, partly cloudy weather with light rain was observed over the country, while the northern parts experienced mostly cloudy weather with light to moderate rainfall. The highest rainfall observed was 73.2 mm at Samdrup Jongkhar station on 5th May</p> <p>Overall, the temperature in the country has been increasing over the last week. However, the maximum temperature started to drop over the country yesterday. The highest temperature recorded in the country was 34.0 deg C in Punakha yesterday and the day before yesterday, while the lowest temperature was 1.5 deg C in Haa on 9 May.</p>
<p>Salient synoptic features</p>	<p>The low-pressure area in the South-East Bay of Bengal and the adjoining South Andaman Sea on 8 May intensified into a deep depression on 10 May 2023 over the same region. It has developed into a cyclonic storm named “Mocha” this morning and will further intensify into a very severe cyclonic storm moving north-northwest wards towards East-Central Bay of Bengal from 12 -14 May. As of the current cyclone track, it is likely to cross South East Bangladesh and North Myanmar coast during the afternoon of 14 May. Bhutan is likely to experience peripheral impacts of the cyclone from 15 May.</p> <p>Also the Western disturbance passing over the country is likely to bring rainfall and thunderstorms over isolated parts of the country during 13-14 May.</p>
<p>Weather Remarks</p>	
<p>Partly cloudy weather is expected over the country tomorrow 12 May. Due to the western disturbance passing over the country, mostly cloudy weather with light rain and thunderstorms is expected over the country towards the evening on 13-14 May.</p> <p>Owing to the peripheral impacts of the cyclonic storm “Mocha”, Bhutan is likely to experience light rainfall and gusty wind over the country from 15th May.</p>	

Updates will be issued if there are significant changes in the forecast and as the cyclone develops further.



ལྷོ། རྒྱལ་ཡོངས་ཚུན་བྱུང་དང་གནམ་གཤིས་རིག་པའི་སྡེ་བ།
NATIONAL CENTRE FOR HYDROLOGY AND METEOROLOGY
THIMPHU: BHUTAN

“Centre of excellence in Hydrology, Meteorology and Cryosphere Science and Services”

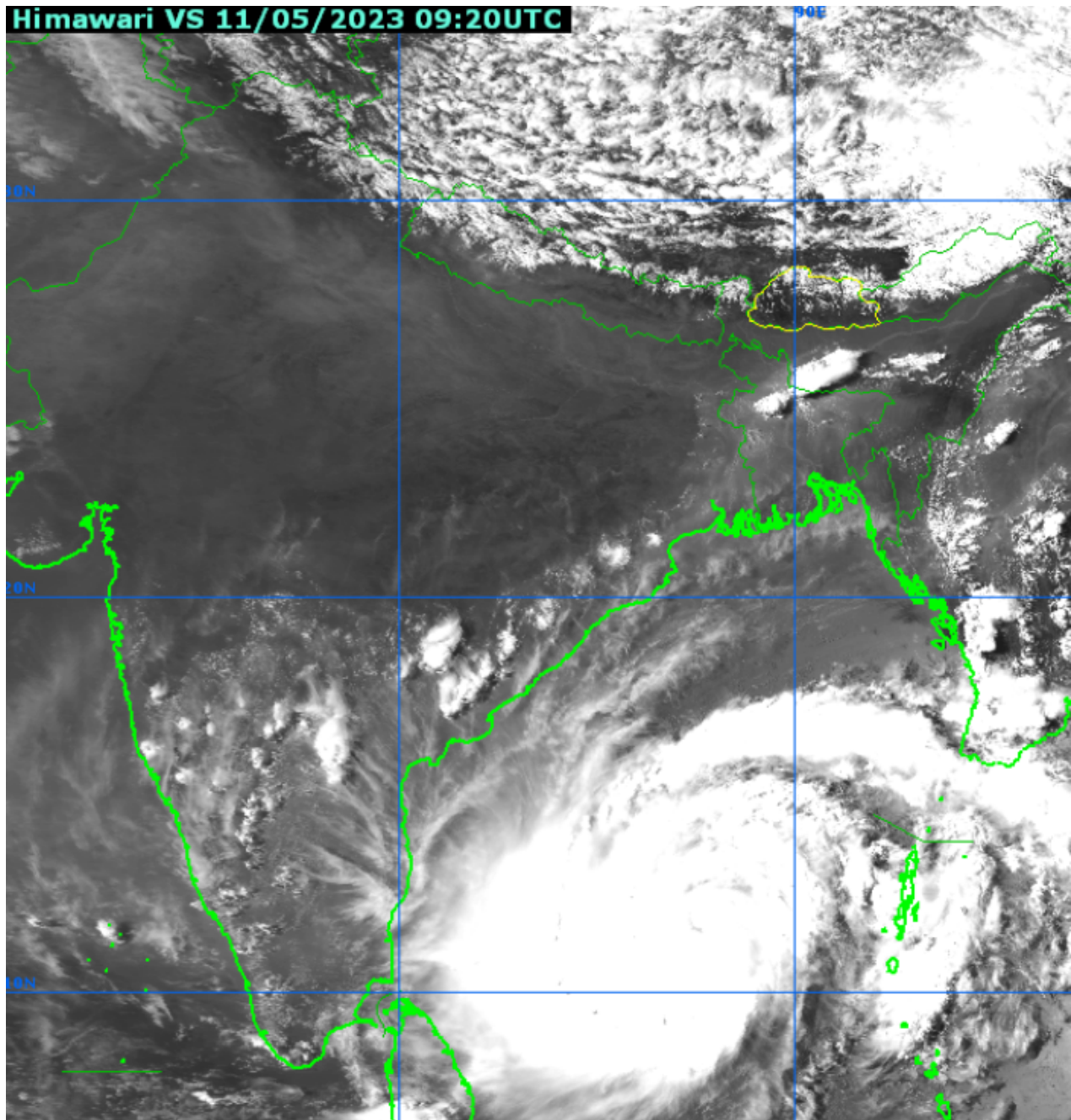


Figure: Himawari Visible Satellite Image at 3:20 pm BST on 11 May 2023