

1. Introduction

Hydrology and Water Resources Services Division (HWRSD) is one of the four Divisions of the Center, responsible for generating and disseminating information and services related to hydrology and water resources.

The Division collects and archives daily data from the river gauging station located across the country, to keep updated on the status of the flow, the Division is coming up with Monthly Flow Monitoring Report in selected hydrological stations located in different river basins. Currently, following stations (figure 1) are selected for monthly monitoring of the flow;

1. Lungtenphu station in Wangchhu,
2. Kerabaristaion in Punatsangchhu basin and
3. Bjizam station in Mangdechhu basin.

The main objective of the report is to understand and keep updated flow status of the river and further provide information on the abnormal data observation while comparing with the historical flow data.

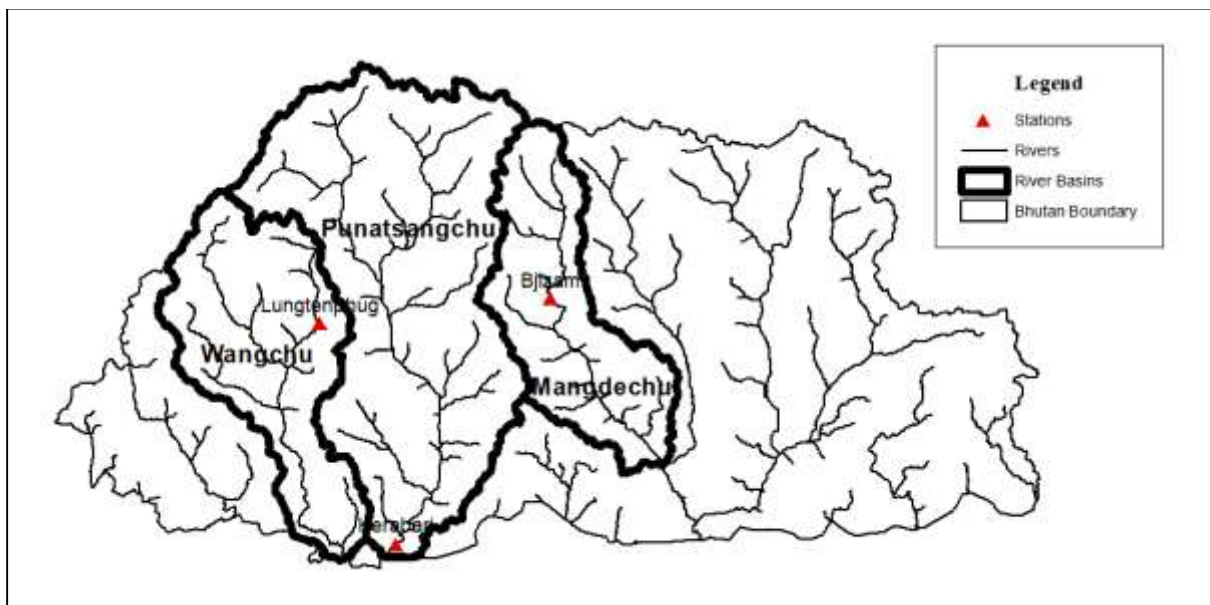


Figure 1 Map showing the selected stations for Flow monitoring

2. Methodology

The flow of July 2020 is compared to the flow of historical July months. The historical flow data is available from 2008 to 2018. The measures of dispersion such as mean, maximum and minimum flows are computed to make comparison.

3. Observation

The average flow recorded for the month of July 2020 is 1329.18 m³/s which is higher than the average of flow during July from 2008-2018. The maximum flow in July (2278.18 m³/s) does not exceed the maximum flow ever recorded in July throughout the past record. The minimum flow of July 2020 exceeds the minimum flow ever recorded in July throughout the past record.

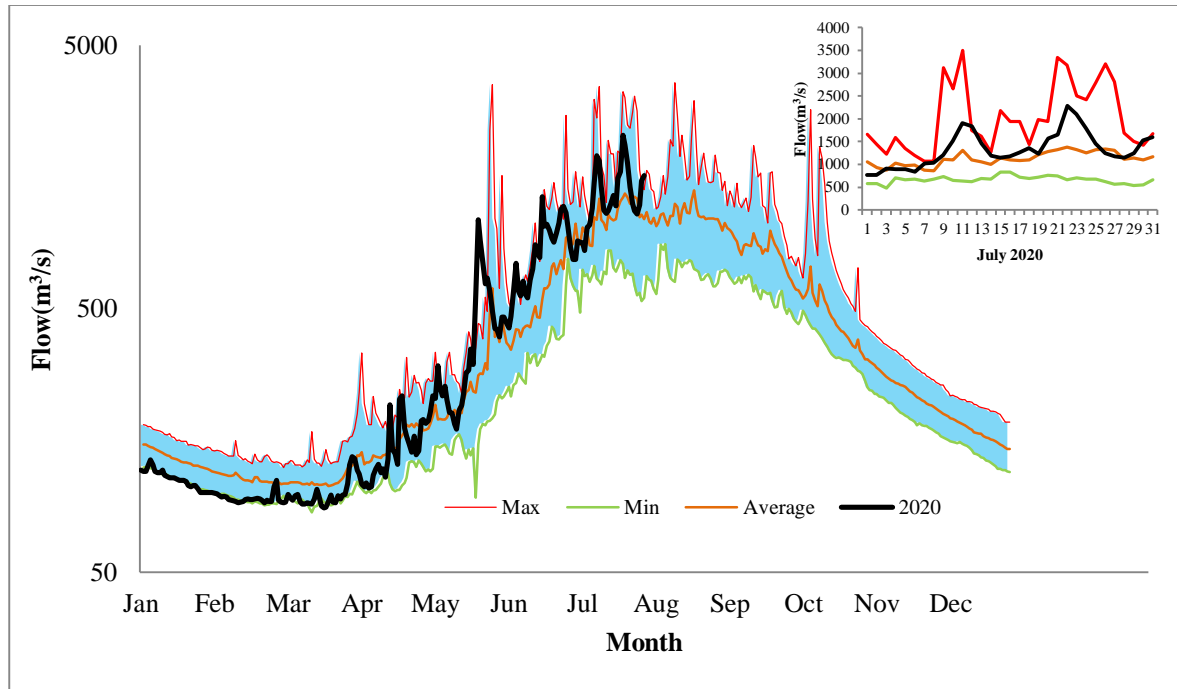


Figure 2 Daily flow status of July 2020 as compared to historical daily flow data of July months

Table 1 Table of flow statistics comparison between July of 2020 and historical July (2008-2018).

Statistics	July 2020 (m ³ /s)	Historical July(2008-2018)m ³ /s
Mean flow	1329.18	1127.17
Max flow	2278.18	3502.57
Min flow	769.07	484.21

4. Summary

1. The mean flow of July 2020 is observed to be 202.01 m³/s higher compared to the mean of Normal flow (Average of flow for July from 2008-2018).
2. The minimum flow in July 2020 is observed to be higher by 284.86 m³/s compared to the minimum flow ever observed in July month from 2008-2018.
3. The Maximum flow of July 2020 is observed to be not exceeding the maximum flow ever recorded in the July month from 2008-2018.