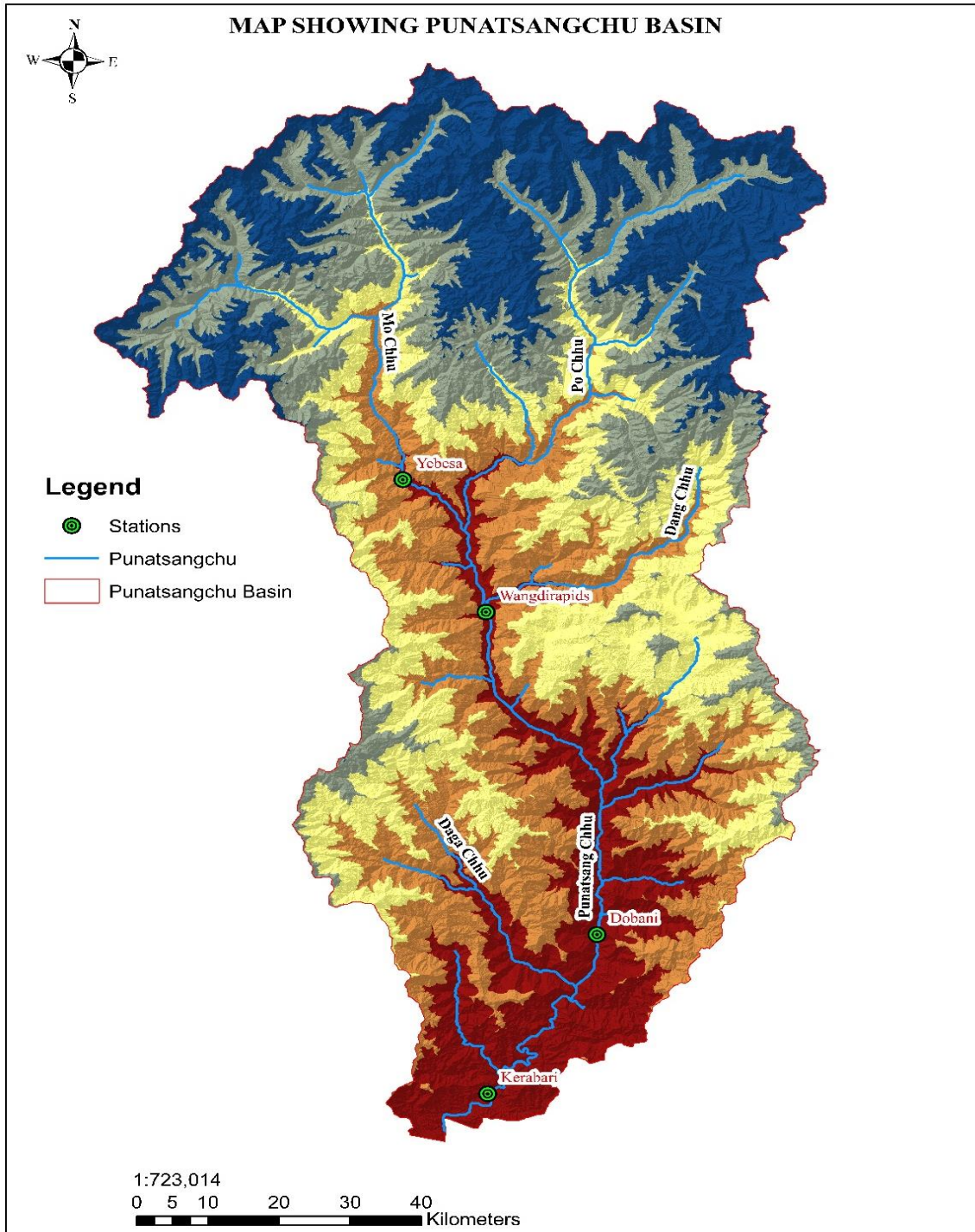


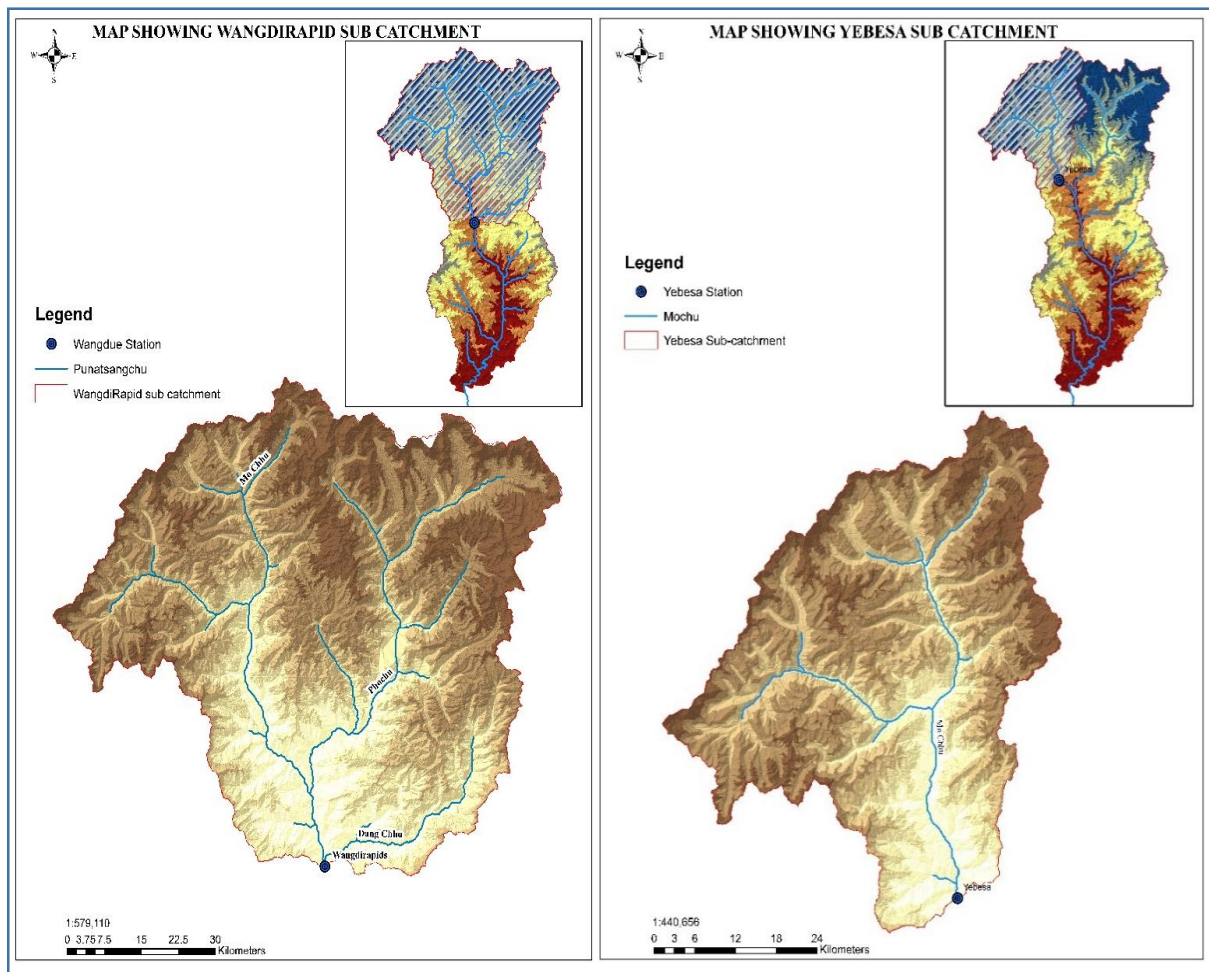
2 Punatsangchu Basin

The Punatsangchu (or Sankosh river) consists of two major tributaries, Phochhu and Mochhu, that originate from Gasa Dzongkhag. The two rivers join at Punakha Dzong to become Punatsangchu (Sankosh) that flows through Wangdue Phodrang, Tsirang and Sarpang dzongkhags, before flowing to the Indian Plains.

There are six manual stations (four principle and two secondary) in the basin. The catchment delineation is based on the four located at Yebesa, Wangrapid, Sankosh and Kerabari along Punatsangchu river.



2.1 Sub-Catchment



WangdiRapid Sub Catchment:

Station Location: WangdiRapid on Punstangchu

Coordinates: longitude : 89:54:11

Latitude : 27:27:45

Elevation : 1190

Catchment Area: 5647.62sq.km

Yebesa Sub catchment

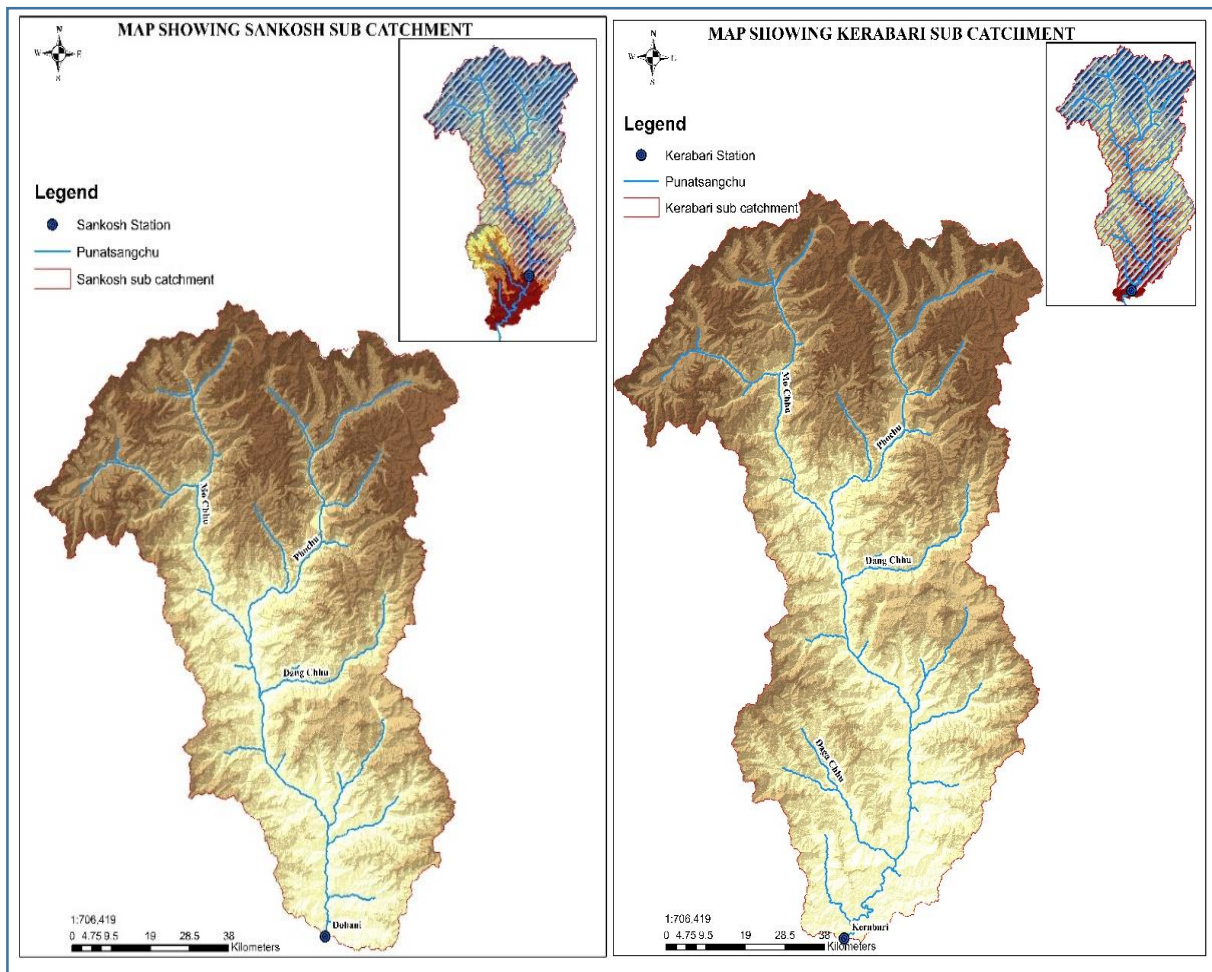
Station Location: Yebesa on Mochu

Coordinates: longitude : 89:49:03

latitude : 27:37:59

elevation : 1230

Catchment Area: 2223.3sq.km



Sankosh Sub Catchment:

Station Location: Sankosh Dobani on Punstangchu

Coordinates: longitude : 90:04:36

Latitude : 27:00:21

Elevation : 320

Catchment Area: 5647.62sq.km

Kerabari Sub catchment

Station Location: Kerabari on Punatsangchu

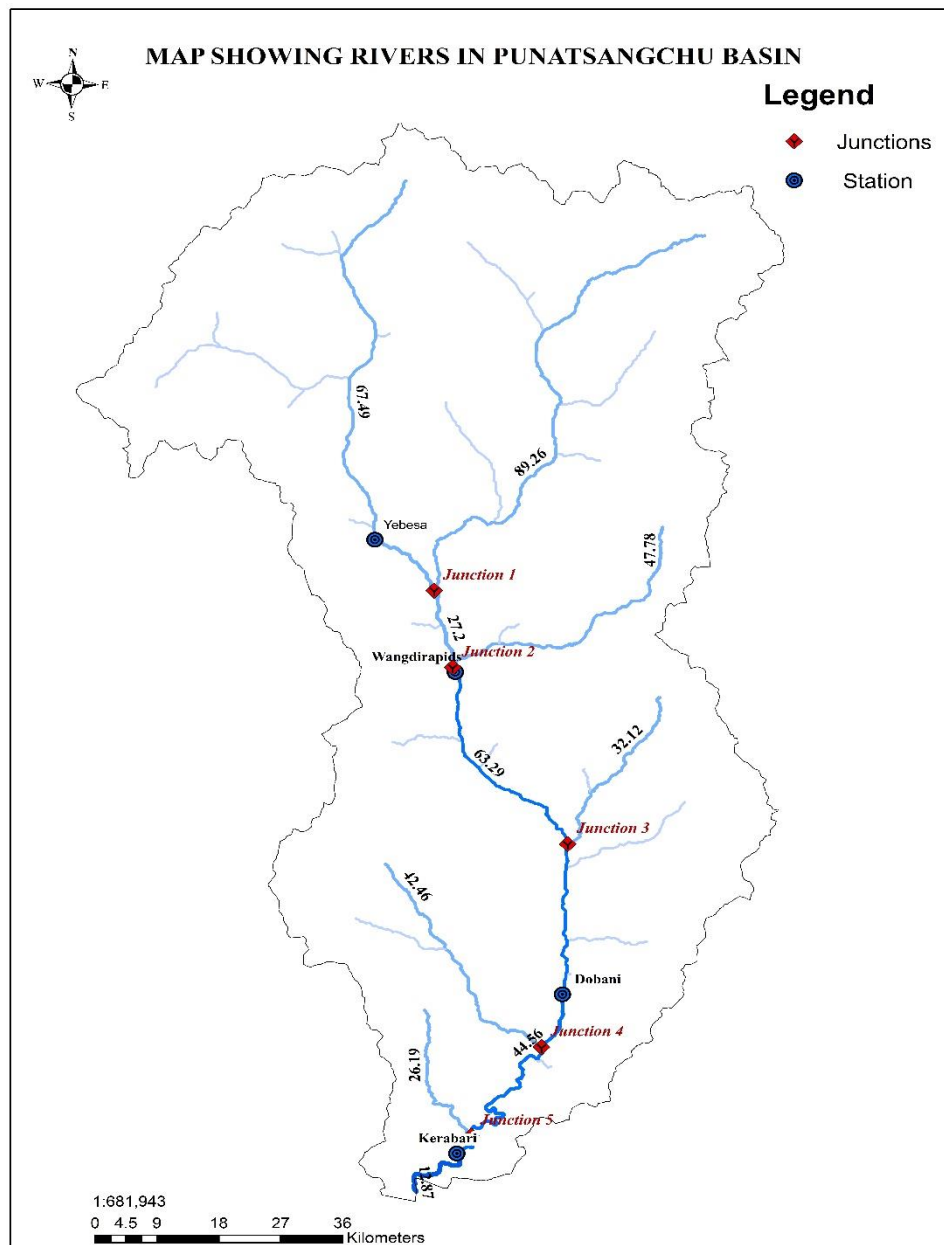
Coordinates: longitude : 89:55:41

latitude : 26:46:06

elevation : 150

Catchment Area: 2223.3sq.km

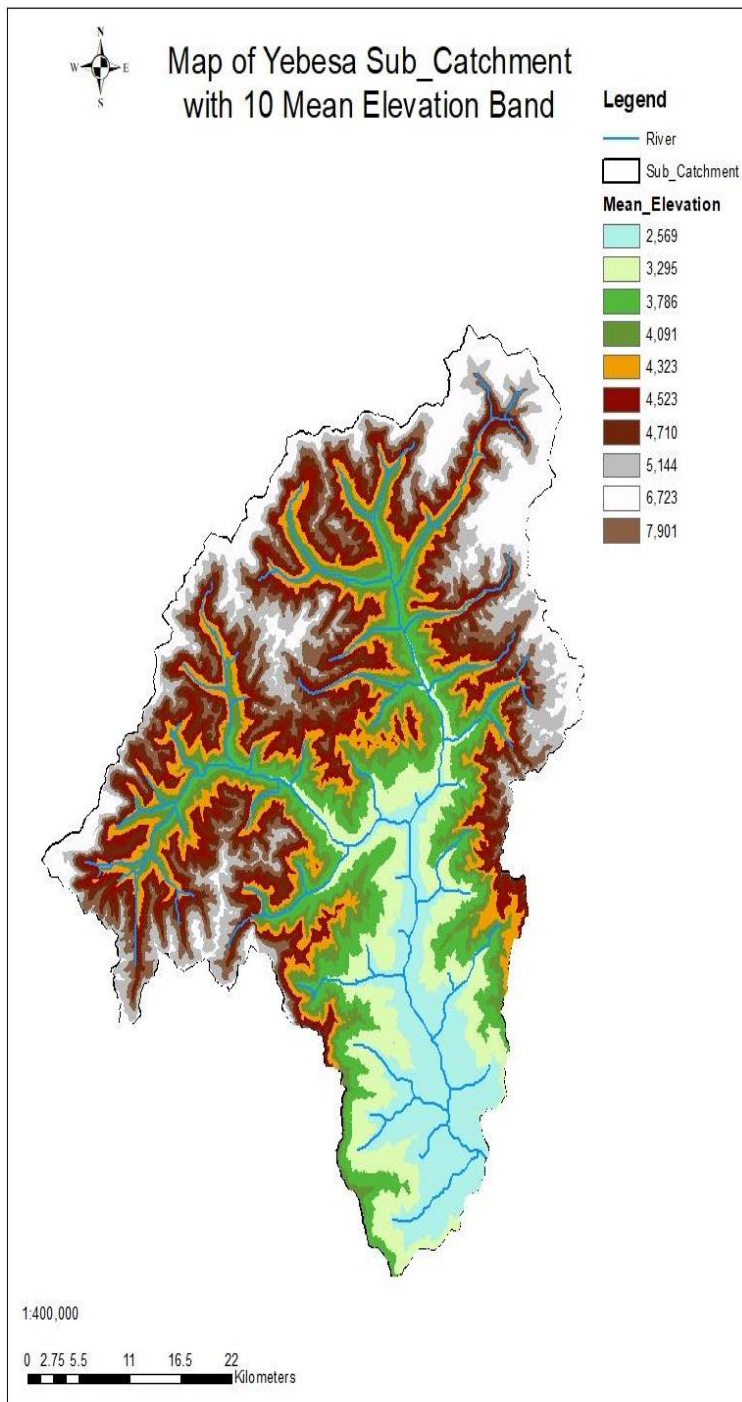
Major Streams and River Lengths:



Sl.No	Rivers	Length (km)
1	Mochu till Yebesa	67.48
2	Mochu till WangdiRapids	94.68
3	Phochu till WangdiRapids	103.25
4	Dangchu till WangdiRapids	47.77
5	WangdiRapids to Sankosh	63.29
6	Sankosh to Kerabari	44.57
7	Dagachu till Kerabari	77.46
8	Longest River Length (Phochu)	234.72

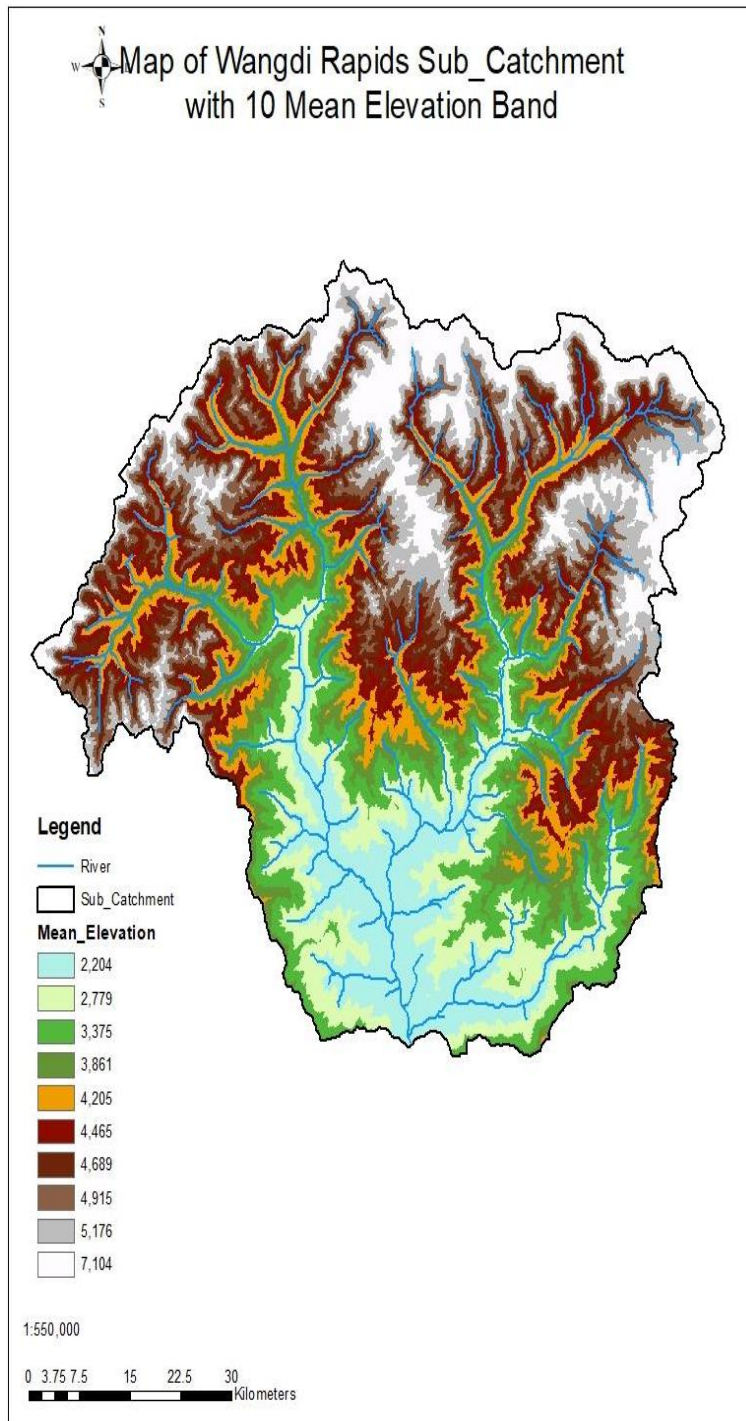
2.2 Land Use Area

Yebesa Sub catchment:



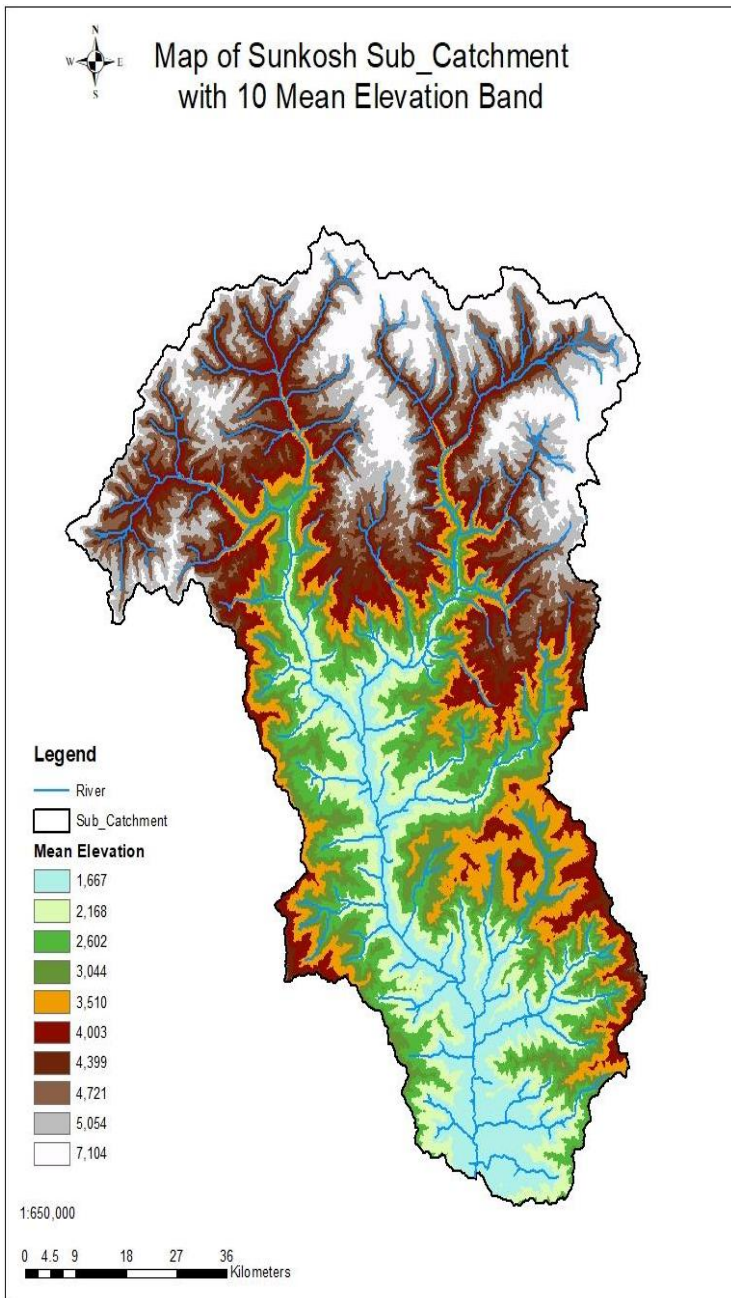
Sl. No	Mean Elevation Band	Type	Area (sq.km)
1	2569	field	13.842
		forest	216.858
2	3295	field	11.535
		forest	219.165
3	3786	field	23.07
		forest	205.323
		glacier	2.307
4	4091	field	55.368
		forest	154.569
		glacier	20.763
5	4323	field	92.28
		forest	113.043
		glacier	25.377
6	4523	field	117.657
		forest	80.745
		glacier	32.298
7	4710	field	131.499
		forest	62.289
		glacier	36.912
8	4901	field	126.885
		forest	55.368
		glacier	48.447
9	5144	field	92.28
		forest	55.368
		glacier	83.052
10	6723	field	32.298
		forest	34.605
		glacier	163.797

WangdiRapid Sub catchment:



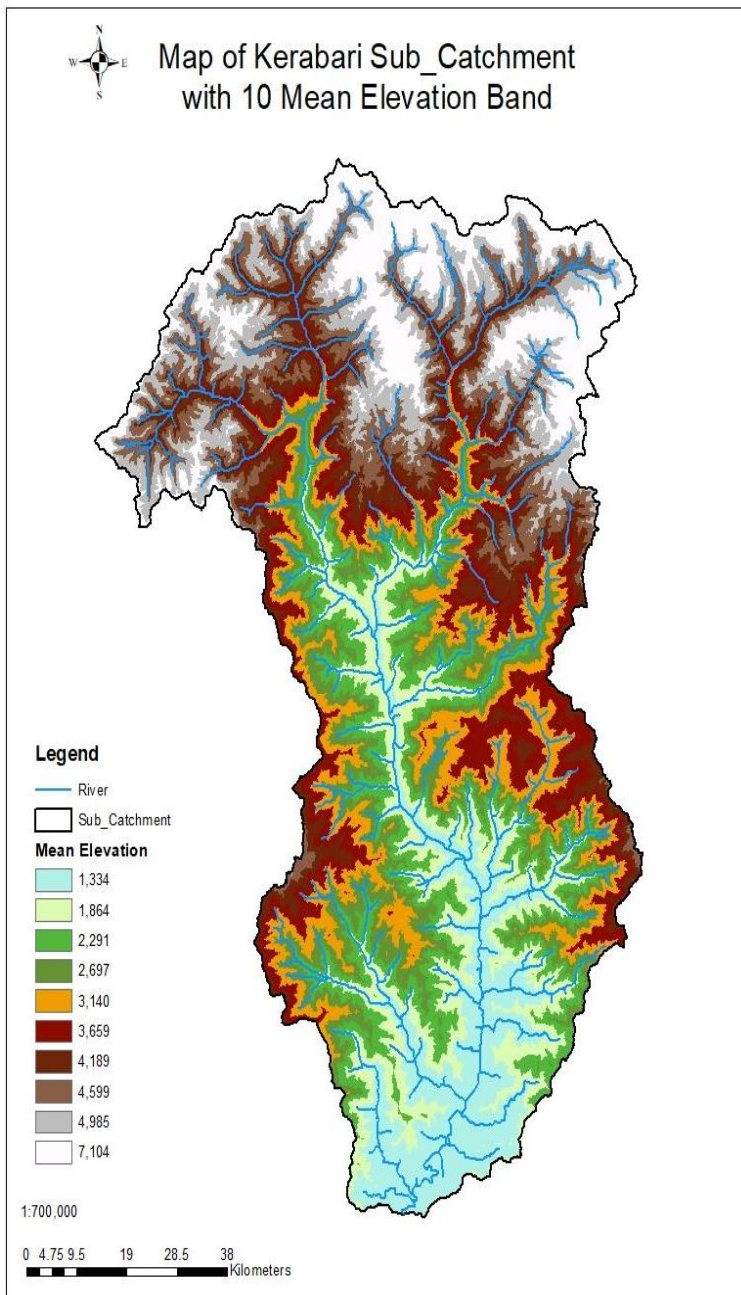
Sl. No	Mean Elevation Band	Type	Area (sq.km)
1	2204	field	101.502
		forest	462.398
2	2779	field	28.195
		forest	535.705
3	3375	field	45.112
		forest	518.788
4	3861	field	62.029
		forest	490.593
		glac	11.278
5	4205	field	140.975
		forest	389.091
		glac	33.834
6	4465	field	214.282
		forest	281.95
		glac	67.668
7	4689	field	236.838
		forest	208.643
		glac	118.419
8	4915	field	231.199
		forest	163.531
		glac	169.17
9	5176	field	174.809
		forest	118.419
		glac	270.672
10	7104	field	62.029
		forest	67.668
		glac	434.203

Sankosh Sub catchment:



Sl. No.	Mean Elevation Band	Type	Area (sq.km)
1	1667	field	177.034
		forest	627.666
2	2168	field	72.423
		forest	732.277
3	2602	field	24.141
		forest	780.559
4	3044	field	64.376
		forest	740.324
5	3510	field	64.376
		forest	740.324
6	4003	field	104.611
		forest	683.995
		glacier	16.094
7	4399	field	257.504
		forest	474.773
		glacier	72.423
8	4721	field	329.927
		forest	305.786
		glacier	168.987
9	5054	field	305.786
		forest	209.222
		glacier	289.692
10	7104	field	128.752
		forest	112.658
		glacier	563.29

Kerabari Sub catchment:



Sl. No	Mean Elevation Band	Type	Area (sq.km)
1	1334	field	278.777
		forest	682.523
2	1864	field	192.26
		forest	769.04
3	2291	field	48.065
		forest	913.235
4	2697	field	38.452
		forest	922.848
5	3140	field	67.291
		forest	894.009
6	3659	field	76.904
		forest	884.396
7	4189	field	182.647
		forest	740.201
7	4189	Glacier	38.452
8	4599	field	365.294
		forest	461.424
8	4599	Glacier	134.582
9	4985	field	394.133
		forest	278.777
9	4985	Glacier	288.39
10	7104	field	182.647
		forest	144.195
10		Glacier	634.458

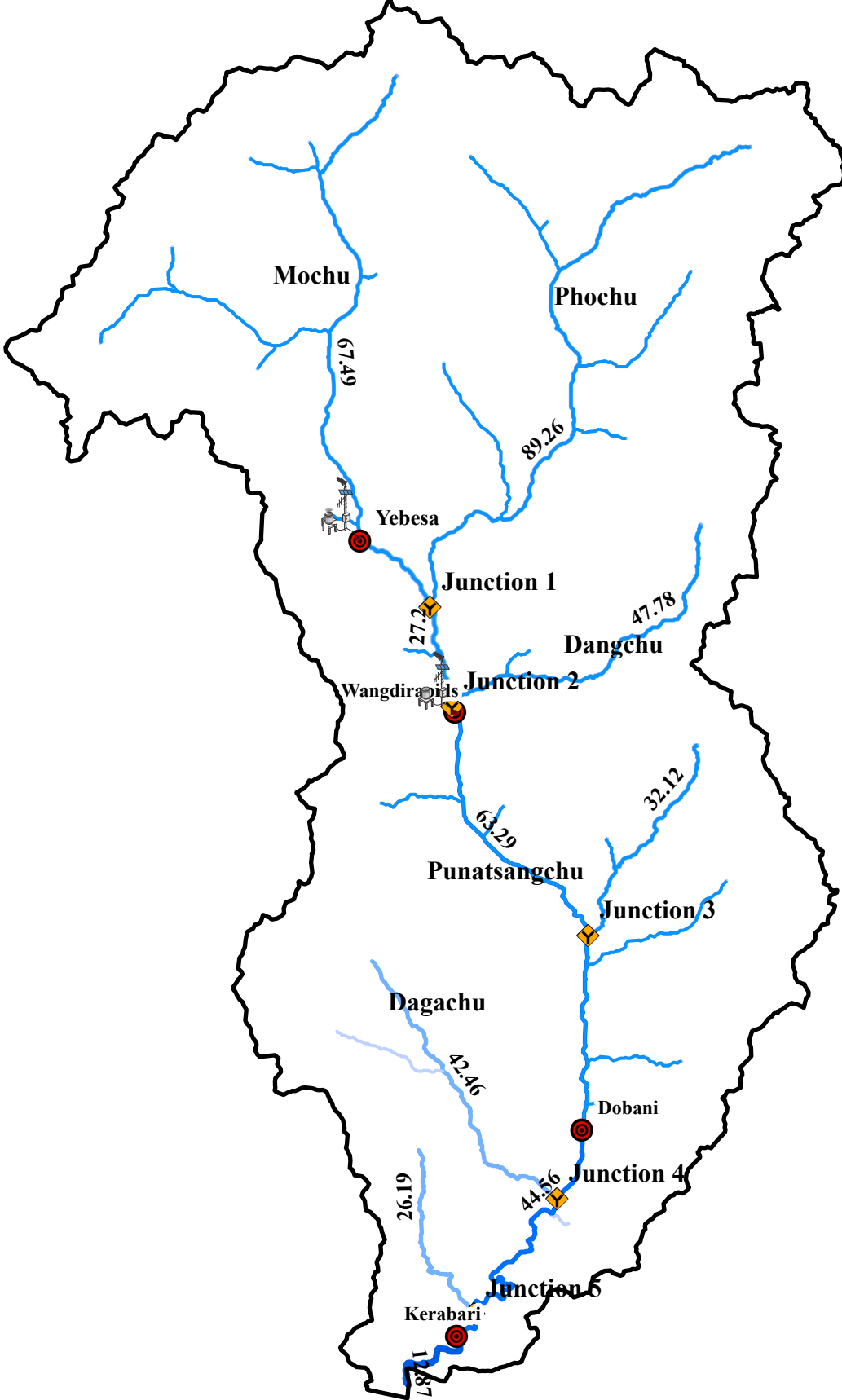


MAP SHOWING LENGTHS OF RIVERS IN PUNATSANGCHU BASIN



Legend

- Junctions
- Station



1:756,057

